

# HOOFDSTUK 12

## MALLEABELE FITTINGEN & STAAL



Pagina 660



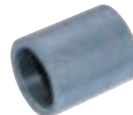
Pagina 670



Pagina 671



Pagina 672



Pagina 672



Pagina 673



Pagina 674



Pagina 685



Pagina 686

**De beste prijs / kwaliteitverhouding  
in pijpnippels!**



## Malleabel fitwerk

- Geproduceerd van RECYCLED IJZER onder ISO NORM
- Topkwaliteit
- Compleet assortiment
- Goede prijs- / kwaliteitsverhouding

### Toepassingen:

Persluchtsystemen, ringleidingsystemen, hydraulische systemen, sprinklerinstallaties, olie- en benzinesystemen, waterleidingen, gasleidingen, stoomleidingen, CV-systemen, gritstraal-installaties, smeersystemen enz.

### Materiaal:

GGY (Smeedbaar gietijzer).

### Normering:

W40-05, volgens ISO-5922, DIN-1692, PN-82/H83221.

### Kwaliteitscontrole:

ISO-49. DIN-2950, PN-76/H-74392, PN-79/H-74393.

### Oppervlaktebehandeling:

Zwart blank gepassiveerd of thermisch badverzinkt.

### Testdruk:

Bij kamertemperatuur = 600 KBA.

### Werkdruk:

Tot 120°C = 2.5 KBA = 25 bar.



# 12 Malleabel fitwerk

Hydrauliek

Snelkoppelingen

Afsluiters

Roestvast staal

Fittingen

Luchtconditionering

Gereedschap

Vacuumtechniek

Pneumatiek

Onderdelen compressoren

Diversen

Malleabele fittingen & Staal

Ringleidingssystemen

Slangen

Water, Gas, Sanitair, Verwarming



1Z-Bocht 90° male / female zwart ISO-G4

		H mm	B mm	€
46101313Z	1/4"	80	49	2.10
46101717Z	3/8"	96	54	2.40
46102121Z	1/2"	110	63	2.35
46102727Z	3/4"	138	78	4.00
46103232Z	1"	170	99	5.50
46104242Z	1.1/4"	210	124	9.55
46104848Z	1.1/2"	232	136	12.65
46106060Z	2"	280	167	20.55
46107676Z	2.1/2"	352	211	44.85
46108989Z	3"	410	244	58.00
46100114Z	4"	520	312	105.60

1-Bocht 90° male / female verzinkt ISO-G4

		H mm	B mm	€
46101313	1/4"	80	49	2.60
46101717	3/8"	96	54	3.05
46102121	1/2"	110	63	2.90
46102727	3/4"	138	78	5.05
46103232	1"	170	99	6.85
46104242	1.1/4"	210	124	11.70
46104848	1.1/2"	232	136	15.65
46106060	2"	280	167	25.30
46107676	2.1/2"	352	211	55.65
46108989	3"	410	244	72.00
46100114	4"	520	312	130.45



2Z-Bocht 90° female zwart ISO-G1

		H mm	B mm	€
46091313Z	1/4"	80	52	2.20
46091717Z	3/8"	96	64	2.55
46092121Z	1/2"	110	70	2.60
46092727Z	3/4"	138	89	4.10
46093232Z	1"	170	112	5.55
46094242Z	1.1/4"	210	133	9.55
46094848Z	1.1/2"	232	148	11.80
46096060Z	2"	280	176	16.40
46097676Z	2.1/2"	352	220	45.55
46098989Z	3"	410	258	57.30
46090114Z	4"	520	327	108.70

2-Bocht 90° female verzinkt ISO-G1

		H mm	B mm	€
46091313	1/4"	80	52	2.70
46091717	3/8"	96	64	3.15
46092121	1/2"	110	70	3.25
46092727	3/4"	138	89	5.10
46093232	1"	170	112	6.85
46094242	1.1/4"	210	133	11.80
46094848	1.1/2"	232	148	14.60
46096060	2"	280	176	20.30
46097676	2.1/2"	352	220	56.45
46098989	3"	410	258	70.95
46090114	4"	520	327	134.60



3Z-Bocht 90° male BSPT zwart ISO-G4

		H mm	B mm	€
45032121Z	1/2"	110	70	3.80
45032727Z	3/4"	138	89	4.15
45033232Z	1"	170	112	6.05

3-Bocht 90° male BSPT verzinkt ISO-G4

		H mm	B mm	€
45032121	1/2"	110	70	4.70
45032727	3/4"	138	89	5.20
45033232	1"	170	112	7.45



40Z-Bocht 45° male / female zwart ISO-G4/45

		H mm	€
48101313Z	1/4"	49	3.10
48101717Z	3/8"	57	2.80
48102121Z	1/2"	66	2.65
48102727Z	3/4"	78	3.55
48103232Z	1"	92	5.00
48104242Z	1.1/4"	118	8.70
48104848Z	1.1/2"	127	10.45
48106060Z	2"	152	16.50
48107676Z	2.1/2"	185	36.25
48108989Z	3"	215	39.45
48100114Z	4"	275	89.05

40-Bocht 45° male / female verzinkt ISO-G4/45

		H mm	€
48101313	1/4"	49	3.85
48101717	3/8"	57	3.55
48102121	1/2"	66	3.25
48102727	3/4"	78	4.40
48103232	1"	92	6.20
48104242	1.1/4"	118	11.00
48104848	1.1/2"	127	13.10
48106060	2"	152	20.55
48107676	2.1/2"	185	44.75
48108989	3"	215	49.00
48100114	4"	275	110.80

# Malleabel fitwerk



41Z-Bocht 45° female  
zwart ISO-G1/45

MALZ		H mm	€
48091717Z	3/8"	60	3.30
48092121Z	1/2"	73	3.10
48092727Z	3/4"	85	4.00
48093232Z	1"	104	5.10
48094242Z	1.1/4"	130	9.05
48094848Z	1.1/2"	137	11.95
48096060Z	2"	163	16.90
48097676Z	2.1/2"	200	33.15
48098989Z	3"	225	42.30

41-Bocht 45° female  
verzinkt ISO-G1/45

MALF		H mm	€
48091717	3/8"	60	4.10
48092121	1/2"	73	3.85
48092727	3/4"	85	4.90
48093232	1"	104	6.20
48094242	1.1/4"	130	11.20
48094848	1.1/2"	137	14.70
48096060	2"	163	20.70
48097676	2.1/2"	200	41.15
48098989	3"	225	52.40



90Z-Knie 90° female zwart ISO-A1

MALZ		H mm	B mm	€
45091313Z	1/4"	42	34	1.35
45091717Z	3/8"	50	39	1.20
45092121Z	1/2"	56	45	0.90
45092727Z	3/4"	66	53	1.45
45093232Z	1"	76	62	1.95
45094242Z	1.1/4"	90	75	3.75
45094848Z	1.1/2"	100	83	6.20
45096060Z	2"	116	98	7.20
45097676Z	2.1/2"	138	115	20.55
45098989Z	3"	156	132	28.20
45090114Z	4"	192	165	45.05

90-Knie 90° female verzinkt ISO-A1

MALF		H mm	B mm	€
45091313	1/4"	42	34	1.70
45091717	3/8"	50	39	1.45
45092121	1/2"	56	45	1.35
45092727	3/4"	66	53	1.70
45093232	1"	76	62	2.45
45094242	1.1/4"	90	75	4.60
45094848	1.1/2"	100	83	7.70
45096060	2"	116	98	8.95
45097676	2.1/2"	138	115	25.50
45098989	3"	156	132	35.05
45090114	4"	192	165	61.50



90Z-Knie 90° verlopend female  
zwart ISO-A1

MALZ		H mm	B mm	€
45092117Z	1/2"-3/8"	52	42	1.60
45092717Z	3/4"-3/8"	56	47	2.55
45092721Z	3/4"-1/2"	62	50	1.65
45093221Z	1"-1/2"	68	57	2.55
45093227Z	1"-3/4"	72	60	2.65
45094221Z	1.1/4"-1/2"	76	68	4.10
45094232Z	1.1/4"-1"	84	71	4.40
45094827Z	1.1/2"-3/4"	88	76	6.55
45094832Z	1.1/2"-1"	92	78	6.40
45094842Z	1.1/2"-1.1/4"	96	80	7.00
45096032Z	2"-1"	104	90	11.10
45096042Z	2"-1.1/4"	108	90	11.80
45096048Z	2"-1.1/2"	110	93	11.35

90-Knie 90° verlopend female  
verzinkt ISO-A1

MALF		H mm	B mm	€
45091713	3/8"-1/4"	-	-	2.45
45092113	1/2"-1/4"	-	-	3.25
45092117	1/2"-3/8"	52	42	1.85
45092717	3/4"-3/8"	56	47	3.15
45092721	3/4"-1/2"	62	50	2.30
45093217	1"-3/8"	-	-	3.40
45093221	1"-1/2"	68	57	3.10
45093227	1"-3/4"	72	60	3.30
45094221	1.1/4"-1/2"	76	68	5.10
45094227	1.1/4"-3/4"	-	-	8.40
45094232	1.1/4"-1"	84	71	5.50
45094821	1.1/2"-1/2"	-	-	7.70
45094827	1.1/2"-3/4"	88	76	8.50
45094832	1.1/2"-1"	92	78	7.90
45094842	1.1/2"-1.1/4"	96	80	8.70
45096021	2"-1/2"	-	-	10.55
45096027	2"-3/4"	-	-	11.70
45096032	2"-1"	104	90	13.90
45096042	1.1/4"	108	90	14.70
45096048	2"-1.1/2"	110	93	13.90

Hydrauliek  
Snelkoppelingen  
Afsluiters  
Roestvast staal  
Fittingen  
Luchtconditionering  
Gereedschap  
Vacuümtechniek  
Pneumatiek  
Onderdelen compressoren  
Diversen

Malleabele fittingen & Staal  
Ringleidingssystemen  
Slangen  
Water, Gas, Sanitair, Verwarming

# 12 Malleabel fitwerk

Hydrauliek  
Snelkoppelingen  
Afsluiters  
Roestvast staal



92Z-Knie 90° male / female zwart ISO-A4

45101313Z	1/4"	42	40	1.35	
45101717Z	3/8"	50	45	1.35	
45102121Z	1/2"	56	54	1.15	
45102727Z	3/4"	66	61	1.60	
45103232Z	1"	76	75	2.60	
45104242Z	1.1/4"	90	90	4.40	
45104848Z	1.1/2"	100	97	6.65	
45106060Z	2"	116	111	8.70	
45107676Z	2.1/2"	138	133	21.25	
45108989Z	3"	156	151	27.95	
45100114Z	4"	192	185	47.00	

Malleabele fittingen & Staal  
92-Knie 90° male / female verzinkt ISO-A4

45101313	1/4"	42	40	1.70	
45101717	3/8"	50	45	1.70	
45102121	1/2"	56	54	1.35	
45102727	3/4"	66	61	1.95	
45103232	1"	76	75	3.25	
45104242	1.1/4"	90	90	5.50	
45104848	1.1/2"	100	97	8.30	
45106060	2"	116	111	10.90	
45107676	2.1/2"	138	133	26.30	
45108989	3"	156	151	34.70	
45100114	4"	192	185	61.65	



92Z-Knie 90° verlopend male / female zwart ISO-A4

45102117Z	1/2"-3/8"	52	50	3.40	
45102721Z	3/4"-1/2"	60	61	3.75	
45103227Z	1"-3/4"	70	68	5.10	

92-Knie 90° verlopend male / female verzinkt ISO-A4

45102117	1/2"-3/8"	52	50	4.30	
45102721	3/4"-1/2"	60	61	4.80	
45103227	1"-3/4"	70	68	6.20	

96Z-Driedelige knie conisch dichtend female zwart ISO-UA11

49091717Z	3/8"	50	66	36	6.85	
49092121Z	1/2"	56	75	46	5.55	
49092727Z	3/4"	66	81	50	6.40	
49093232Z	1"	76	95	55	9.30	
49094242Z	1.1/4"	90	118	70	15.50	
49094848Z	1.1/2"	100	131	75	18.25	
49096060Z	2"	116	137	88	30.80	

96-Driedelige knie conisch dichtend female verzinkt ISO-UA11

49091717	3/8"	50	66	36	8.50	
49092121	1/2"	56	75	46	7.00	
49092727	3/4"	66	81	50	7.90	
49093232	1"	76	95	55	11.50	
49094242	1.1/4"	90	118	70	19.20	
49094848	1.1/2"	100	131	75	22.50	
49096060	2"	116	137	88	38.05	



98Z-Driedelige knie conisch dichtend male / female zwart ISO-UA12

49101717Z	3/8"	50	78	36	5.80	
49102121Z	1/2"	56	92	46	5.55	
49102727Z	3/4"	66	101	50	7.10	
49103232Z	1"	76	118	55	9.85	
49104242Z	1.1/4"	90	135	70	16.30	
49104848Z	1.1/2"	100	146	75	20.10	
49106060Z	2"	116	165	88	32.65	

98-Driedelige knie conisch dichtend male / female verzinkt ISO-UA12

49101717	3/8"	50	78	36	7.25	
49102121	1/2"	56	92	46	7.00	
49102727	3/4"	66	101	50	8.70	
49103232	1"	76	118	55	12.15	
49104242	1.1/4"	90	135	70	20.20	
49104848	1.1/2"	100	146	75	24.85	
49106060	2"	116	165	88	40.50	

130Z-T sok female zwart ISO-B1

45121313Z	1/4"	42	34	1.90	
45121717Z	3/8"	50	38	1.70	
45122121Z	1/2"	56	45	1.20	
45122727Z	3/4"	66	53	1.95	
45123232Z	1"	76	61	2.80	
45124242Z	1.1/4"	90	74	5.10	
45124848Z	1.1/2"	100	82	8.00	
45126060Z	2"	116	96	11.35	
45127676Z	2.1/2"	138	120	25.05	
45128989Z	3"	156	132	33.80	
45120114Z	4"	192	163	64.85	

130-T sok female verzinkt ISO-B1

45121313	1/4"	42	34	2.35	
45121717	3/8"	50	38	2.10	
45122121	1/2"	56	45	1.60	
45122727	3/4"	66	53	2.45	
45123232	1"	76	61	3.75	
45124242	1.1/4"	90	74	6.30	
45124848	1.1/2"	100	82	9.95	
45126060	2"	116	96	13.90	
45127676	2.1/2"	138	120	31.15	
45128989	3"	156	132	41.65	
45120114	4"	192	163	80.30	

# Malleabel fitwerk



130Z-T sok verlopend female zwart ISO-B1

46171317Z	3/8"-1/4"-3/8"	46	36	3.40
46172117Z	3/8"-1/2"-3/8"	52	40	2.60
46211321Z	1/2"-1/4"-1/2"	48	40	2.70
46211717Z	1/2"-3/8"-3/8"	51	41	2.55
46211721Z	1/2"-3/8"-1/2"	52	44	2.30
46212117Z	1/2"-1/2"-3/8"	54	44	2.55
46212721Z	1/2"-3/4"-1/2"	61	46	2.40
46271327Z	3/4"-1/4"-3/4"	53	46	3.75
46271721Z	3/4"-3/8"-1/2"	66	53	2.80
46272121Z	3/4"-1/2"-1/2"	59	50	2.30
46272127Z	3/4"-1/2"-3/4"	61	50	2.05
46272721Z	3/4"-3/4"-1/2"	71	52	2.55
46273227Z	3/4"-1"-3/4"	71	54	4.30
46321732Z	1"-3/8"-1"	62	55	4.45
46322121Z	1"-1/2"-1/2"	62	56	4.60
46322132Z	1"-1/2"-1"	66	56	2.70
46322721Z	1"-3/4"-1/2"	67	56	4.15
46322727Z	1"-3/4"-3/4"	69	59	3.40
46322732Z	1"-3/4"-1"	71	59	2.95
46323221Z	1"-1"-1/2"	72	60	3.60
46323227Z	1"-1"-3/4"	74	60	3.80
46324832Z	1"-1.1/2"-1"	88	66	8.30
46422132Z	1.1/4"-1/2"-1"	70	66	5.20
46422142Z	1.1/4"-1/2"-1.1/4"	72	66	4.60
46422727Z	1.1/4"-3/4"-3/4"	69	74	6.65
46422742Z	1.1/4"-3/4"-1.1/4"	77	69	4.90
46423232Z	1.1/4"-1"-1"	80	70	5.95
46423242Z	1.1/4"-1"-1.1/4"	82	70	5.50
46424232Z	1.1/4"-1.1/4"-1"	87	74	6.65
46482748Z	1.1/2"-3/4"-1.1/2"	82	77	6.55
46483242Z	1.1/2"-1"-1.1/4"	86	77	8.00
46483248Z	1.1/2"-1"-1.1/2"	88	78	7.10
46484248Z	1.1/2"-1.1/4"-1.1/2"	94	80	9.55
46602160Z	2"-1/2"-2"	86	86	8.95
46602760Z	2"-3/4"-2"	90	88	11.70
46603260Z	2"-1"-2"	96	92	9.15
46604260Z	2"-1.1/4"-2"	102	92	11.50
46604848Z	2"-1.1/2"-1.1/2"	105	93	13.90
46604860Z	2"-1.1/2"-2"	107	93	13.40
46763276Z	2.1/2"-1"-2.1/2"	107	106	18.15
46764276Z	2.1/2"-1.1/4"-2.1/2"	114	107	24.70
46764876Z	2.1/2"-1.1/2"-2.1/2"	118	107	21.75
46766076Z	2.1/2"-2"-2.1/2"	127	110	24.45
46897689Z	3"-2.1/2"-3"	148	129	37.50



130-T sok verlopend female verzinkt ISO-B1

46171317	3/8"-1/4"-3/8"	46	36	4.35
46172117	3/8"-1/2"-3/8"	52	40	3.25
46211321	1/2"-1/4"-1/2"	48	40	3.55
46211717	1/2"-3/8"-3/8"	51	41	3.10
46211721	1/2"-3/8"-1/2"	52	44	2.80
46212117	1/2"-1/2"-3/8"	54	44	3.10
46212721	1/2"-3/4"-1/2"	61	46	3.05
46213221	1/2"-1"-1/2"	76	61	3.60
46271327	3/4"-1/4"-3/4"	53	46	4.60
46271721	3/4"-3/8"-1/2"	66	53	3.60
46271727	3/4"-3/8"-3/4"	56	48	3.40
46272121	3/4"-1/2"-1/2"	59	50	2.80
46272127	3/4"-1/2"-3/4"	61	50	2.45
46272721	3/4"-3/4"-1/2"	71	52	3.25
46273227	3/4"-1"-3/4"	71	54	5.20
46321732	1"-3/8"-1"	62	55	5.60
46322121	1"-1/2"-1/2"	62	56	5.80
46322127	1"-1/2"-3/4"	-	-	4.10
46322132	1"-1/2"-1"	66	56	3.40
46322721	1"-3/4"-1/2"	67	56	5.10
46322727	1"-3/4"-3/4"	69	59	4.15
46322732	1"-3/4"-1"	71	59	3.65
46323221	1"-1"-1/2"	72	60	4.45
46323227	1"-1"-3/4"	74	60	4.80
46324232	1"-1.1/4"-1"	-	-	8.30
46324832	1"-1.1/2"-1"	88	66	10.30
46421742	1.1/4"-3/8"-1.1/4"	-	-	4.00
46422132	1.1/4"-1/2"-1"	70	66	6.40
46422142	1.1/4"-1/2"-1.1/4"	72	66	5.65
46422727	1.1/4"-3/4"-3/4"	74	69	8.30
46422732	1.1/4"-3/4"-1"	-	-	7.45
46422742	1.1/4"-3/4"-1.1/4"	77	69	6.05
46423232	1.1/4"-1"-1"	80	70	7.35
46423242	1.1/4"-1"-1.1/4"	82	70	6.75
46424227	1.1/4"-1.1/4"-3/4"	-	-	9.85
46424232	1.1/4"-1"-1/4"-1"	87	74	8.30

130-T sok verlopend female verzinkt ISO-B1 (vervolg)

46424842	1.1/4"-1.1/2"-1.1/4"	-	-	12.75
46426042	1.1/4"-2"-1.1/4"	-	-	15.95
46482127	1.1/2"-1/2"-3/4"	-	-	7.45
46482148	1.1/2"-1/2"-1.1/2"	-	-	7.70
46482748	1.1/2"-3/4"-1.1/2"	82	77	8.10
46483227	1.1/2"-1"-3/4"	-	-	8.30
46483232	1.1/2"-1"-1"	-	-	9.95
46483242	1.1/2"-1"-1.1/4"	86	77	9.95
46483248	1.1/2"-1"-1.1/2"	88	78	9.05
46484242	1.1/2"-1.1/4"-1.1/4"	-	-	12.15
46484248	1.1/2"-1.1/4"-1.1/2"	94	80	11.80
46484842	1.1/2"-1.1/2"-1.1/4"	-	-	14.30
46486048	1.1/2"-2"-1.1/2"	-	-	16.30
46602160	2"-1/2"-2"	86	86	11.00
46602760	2"-3/4"-2"	90	88	14.45
46603260	2"-1"-2"	96	92	11.35
46604260	2"-1.1/4"-2"	102	92	14.45
46604860	2"-1.1/2"-1.1/2"	105	93	17.10
46604860	2"-1.1/2"-2"	107	93	16.70
46607660	2"-2.1/2"-2"	-	-	32.95
46608960	2"-3"-2"	-	-	36.90
46762776	2.1/2"-3/4"-2.1/2"	-	-	23.10
46763276	2.1/2"-1"-2.1/2"	107	106	22.50
46764276	2.1/2"-1.1/4"-2.1/2"	114	107	30.80
46764876	2.1/2"-1.1/2"-2.1/2"	118	107	26.85
46766076	2.1/2"-2"-2.1/2"	127	110	30.25
46893289	3"-1"-3"	-	-	36.80
46894289	3"-1.1/4"-3"	-	-	39.35
46894889	3"-1.1/2"-3"	-	-	42.30
46896089	3"-2"-3"	-	-	39.10
46897689	3"-2.1/2"-3"	148	129	46.60

Hydrauliek  
Snelkoppelingen  
Afsluiters  
Roestvast staal  
Fittingen  
Luchtconditionering  
Gereedschap  
Vacuümtechniek  
Pneumatiek  
Onderdelen compressoren  
Diversen  
Malleabele fittingen & Staal  
Ringleidingssystemen  
Slangen  
Water, Gas, Sanitair, Verwarming

# 12 Malleabel fitwerk

Hydrauliek

Snelkoppelingen

Afsluiters

Roestvast staal

Fittingen

Luchtconditionering

Gereedschap

Vacuumtechniek

Pneumatiek

Onderdelen compressoren

Diversen

Malleabele fittingen & Staal

Ringleidingssystemen

Slangen

Water, Gas, Sanitair, Verwarming



131Z-T spuitstuk 90° zwart ISO-E1

49122121Z	1/2"	74	60	4.45	
49122727Z	3/4"	84	69	5.55	
49123232Z	1"	104	86	8.50	
49124242Z	1.1/4"	121	105	11.50	
49124848Z	1.1/2"	133	116	16.90	
49126060Z	2"	160	140	24.25	

131-T spuitstuk 90° verzinkt ISO-E1

49122121	1/2"	74	60	5.55	
49122727	3/4"	84	69	7.00	
49123232	1"	104	86	10.45	
49124242	1.1/4"	121	105	14.30	
49124848	1.1/2"	133	116	20.70	
49126060	2"	160	140	30.00	



165Z-T sok 45° zwart ISO-E1

48122121Z	1/2"	6.80	
48122727Z	3/4"	7.70	
48123232Z	1"	11.50	
48124242Z	1.1/4"	14.20	
48124848Z	1.1/2"	19.20	

165-T sok 45° verzinkt ISO-E1

48122121	1/2"	8.30	
48122727	3/4"	9.55	
48123232	1"	14.30	
48124242	1.1/4"	17.60	
48124848	1.1/2"	23.75	



180Z-Kruissok female zwart ISO-C1

45321717Z	3/8"	50	50	4.00	
45322121Z	1/2"	56	56	3.90	
45322727Z	3/4"	66	66	5.95	
45323232Z	1"	76	76	7.25	
45324242Z	1.1/4"	90	90	9.85	
45324848Z	1.1/2"	100	100	13.10	
45326060Z	2"	116	116	19.50	
45327676Z	2.1/2"	138	138	44.05	
45328989Z	3"	156	156	50.75	
45320114Z	4"	192	192	83.80	

180-Kruissok female verzinkt ISO-C1

45321717	3/8"	50	50	5.30	
45322121	1/2"	56	56	5.10	
45322727	3/4"	66	66	7.70	
45323232	1"	76	76	9.65	
45324242	1.1/4"	90	90	12.75	
45324848	1.1/2"	100	100	17.20	
45326060	2"	116	116	25.30	
45327676	2.1/2"	138	138	57.40	
45328989	3"	156	156	66.10	
45320114	4"	192	192	109.75	
45272121	3/4"-1/2"-1/2"-1/2"	-	-	6.40	
45272127	3/4"-1/2"-3/4"-1/2"	-	-	7.20	
45322132	1"-1/2"-1"-1/2"	-	-	14.30	
45322732	1"-3/4"-1"-3/4"	-	-	14.30	
45602760	2"-3/4"-2"-3/4"	-	-	16.90	



221Z-Knie met zijspruit female zwart ISO-A1

49991717Z	3/8"	52	38	4.90	
49992121Z	1/2"	61	45	3.75	
49992727Z	3/4"	72	52	4.40	
49993232Z	1"	84	61	7.80	
49994242Z	1.1/4"	102	75	13.90	
49994848Z	1.1/2"	112	82	19.65	
49996060Z	2"	127	96	30.00	

221-Knie met zijspruitstuk female verzinkt ISO-A1

49991717	3/8"	52	38	6.20	
49992121	1/2"	61	45	4.60	
49992727	3/4"	72	52	5.50	
49993232	1"	84	61	9.75	
49994242	1.1/4"	102	75	17.20	
49994848	1.1/2"	112	82	24.25	
49996060	2"	127	96	37.10	

## Malleabel fitwerk



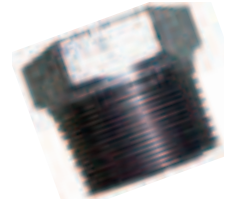
240Z-Ronde verloopsok female zwart ISO-M2

45071713Z	3/8"-1/4"	-	-	1.65
45072113Z	1/2"-1/4"	31	36	1.70
45072117Z	1/2"-3/8"	31	36	1.45
45072717Z	3/4"-3/8"	38	39	1.90
45072721Z	3/4"-1/2"	38	39	1.65
45073217Z	1"-3/8"	46	45	2.65
45073221Z	1"-1/2"	46	45	2.10
45073227Z	1"-3/4"	46	45	1.90
45074217Z	1.1/4"-3/8"	56	50	4.90
45074221Z	1.1/4"-1/2"	56	50	3.90
45074227Z	1.1/4"-3/4"	56	50	3.55
45074232Z	1.1/4"-1"	56	50	3.55
45074821Z	1.1/2"-1/2"	62	55	6.15
45074827Z	1.1/2"-3/4"	62	55	5.50
45074832Z	1.1/2"-1"	62	55	4.20
45074842Z	1.1/2"-1.1/4"	62	55	4.60
45076021Z	2"-1/2"	74	65	8.50
45076027Z	2"-3/4"	74	65	8.95
45076032Z	2"-1"	74	65	8.30
45076042Z	2"-1.1/4"	74	65	7.25
45076048Z	2"-1.1/2"	74	65	7.00
45077632Z	2.1/2"-1"	92	74	16.30
45077642Z	2.1/2"-1.1/4"	92	74	18.05
45077648Z	2.1/2"-1.1/2"	92	74	21.75
45077660Z	2.1/2"-2"	92	74	18.85
45078948Z	3"-1.1/2"	106	80	19.90
45078960Z	3"-2"	106	80	29.10
45078976Z	3"-2.1/2"	106	80	33.25
45711460Z	4"-2"	130	94	50.45
45711476Z	4"-2.1/2"	130	94	52.65
45711489Z	4"-3"	130	94	52.55



240-Ronde verloopsok female verzinkt ISO-M2

45071713	3/8"-1/4"	27	30	2.05
45072113	1/2"-1/4"	31	36	2.10
45072117	1/2"-3/8"	31	36	1.80
45072717	3/4"-3/8"	38	39	2.40
45072721	3/4"-1/2"	38	39	2.10
45073213	1"-1/4"	-	-	4.00
45073217	1"-3/8"	46	45	3.40
45073221	1"-1/2"	46	45	2.60
45073227	1"-3/4"	46	45	2.40
45074217	1.1/4"-3/8"	56	50	6.05
45074221	1.1/4"-1/2"	56	50	4.95
45074227	1.1/4"-3/4"	56	50	4.40
45074232	1.1/4"-1"	56	50	4.40
45074821	1.1/2"-1/2"	62	55	7.70
45074827	1.1/2"-3/4"	62	55	6.85
45074832	1.1/2"-1"	62	55	5.20
45074842	1.1/2"-1.1/4"	62	55	5.80
45076021	2"-1/2"	74	65	10.55
45076027	2"-3/4"	74	65	11.00
45076032	2"-1"	74	65	10.30
45076042	2"-1.1/4"	74	65	9.05
45076048	2"-1.1/2"	74	65	8.50
45077632	2.1/2"-1"	92	74	20.70
45077642	2.1/2"-1.1/4"	92	74	22.90
45077648	2.1/2"-1.1/2"	92	74	27.00
45077660	2.1/2"-2"	92	74	23.30
45078932	3"-1"	-	-	30.70
45078942	3"-1.1/4"	-	-	24.70
45078948	3"-1.1/2"	106	80	24.70
45078960	3"-2"	106	80	36.25
45078976	3"-2.1/2"	106	80	41.15
45711448	4"-1.1/2"	-	-	58.50
45711460	4"-2"	130	94	62.45
45711476	4"-2.1/2"	130	94	65.25
45711489	4"-3"	130	94	67.05



241Z-Verloopring male / female zwart ISO-N4

45041713Z	3/8"-1/4"	22	20	1.00
45042113Z	1/2"-1/4"	27	24	0.75
45042117Z	1/2"-3/8"	27	24	0.75
45042713Z	3/4"-1/4"	34	26	1.45
45042717Z	3/4"-3/8"	34	26	1.30
45042721Z	3/4"-1/2"	34	26	0.85
45043217Z	1"-3/8"	40	29	3.6
45043221Z	1"-1/2"	40	29	1.30
45043227Z	1"-3/4"	40	29	1.20
45044217Z	1.1/4"-3/8"	52	31	4.6
45044221Z	1.1/4"-1/2"	52	31	4.6
45044227Z	1.1/4"-3/4"	52	31	4.6
45044232Z	1.1/4"-1"	52	31	4.6
45044821Z	1.1/2"-1/2"	62	31	5.5
45044827Z	1.1/2"-3/4"	62	31	5.5
45044832Z	1.1/2"-1"	62	31	5.5
45044842Z	1.1/2"-1.1/4"	62	31	5.5
45046021Z	2"-1/2"	73	35	6.4
45046027Z	2"-3/4"	73	35	6.4
45046032Z	2"-1"	73	35	6.4
45046042Z	2"-1.1/4"	73	35	6.4
45046048Z	2"-1.1/2"	73	35	6.4
45047632Z	2.1/2"-1"	90	40	8.0
45047642Z	2.1/2"-1.1/4"	90	40	8.0
45047648Z	2.1/2"-1.1/2"	90	40	8.0
45047660Z	2.1/2"-2"	90	40	8.0
45048932Z	3"-1"	108	44	9.6
45048942Z	3"-1.1/4"	108	44	9.6
45048948Z	3"-1.1/2"	108	44	9.6
45048960Z	3"-2"	108	44	9.6
45048976Z	3"-2.1/2"	108	44	9.6
45411460Z	4"-2"	136	51	12.0
45411476Z	4"-2.1/2"	136	51	12.0
45411489Z	4"-3"	136	51	12.0

Hydrauliek

Snelkoppelingen

Afsluiters

Roestvast staal

Fittingen

Luchtconditionering

Gereedschap

Vacuümtechniek

Pneumatiek

Onderdelen compressoren

Diversen

Malleabele fittingen &amp; Staal

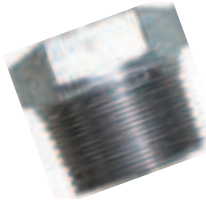
Ringleidingssystemen

Slangen

Water, Gas, Sanitair, Verwarming

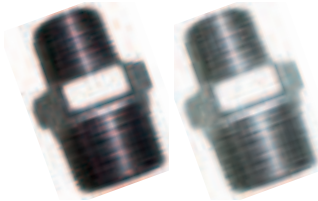
# 12 Malleabel fitwerk

Hydrauliek  
Snelkoppelingen  
Afsluiters  
Roestvast staal



241-Verloopring male / female verzinkt ISO-N4

				H mm	B mm	€
Gereedschap	45041713	3/8"-1/4"	22	20	19	1.40
	45042113	1/2"-1/4"	27	24	24	1.00
	45042117	1/2"-3/8"	27	24	24	1.00
Vacuumtechniek	45042713	3/4"-1/4"	34	26	30	1.85
	45042717	3/4"-3/8"	34	26	30	1.45
	45042721	3/4"-1/2"	34	26	30	1.20
Pneumatiek	45043217	1"-3/8"	40	29	36	2.40
	45043221	1"-1/2"	40	29	36	1.65
	45043227	1"-3/4"	40	29	36	1.45
Onderdelen compressoren	45044217	1.1/4"-3/8"	52	31	46	4.15
	45044221	1.1/4"-1/2"	52	31	46	2.80
	45044227	1.1/4"-3/4"	52	31	46	2.40
Diversen	45044232	1.1/4"-1"	52	31	46	1.70
Malleabele fittingen & Staal	45044821	1.1/2"-1/2"	62	31	55	3.55
	45044827	1.1/2"-3/4"	62	31	55	3.85
	45044832	1.1/2"-1"	62	31	55	2.60
Ringleidingssystemen	45044842	1.1/2"-1.1/4"	62	31	55	2.70
	45046021	2"-1/2"	73	35	64	7.20
Slangen	45046027	2"-3/4"	73	35	64	7.00
	45046032	2"-1"	73	35	64	5.80
Water, Gas, Sanitair, Verwarming	45046042	2"-1.1/4"	73	35	64	5.50
	45046048	2"-1.1/2"	73	35	64	5.05
	45047632	2.1/2"-1"	90	40	80	11.20
	45047642	2.1/2"-1.1/4"	90	40	80	13.10
	45047648	2.1/2"-1.1/2"	90	40	80	12.40
	45047660	2.1/2"-2"	90	40	80	9.40
	45048932	3"-1"	108	44	96	17.55
	45048942	3"-1.1/4"	108	44	96	17.55
	45048948	3"-1.1/2"	108	44	96	16.30
	45048960	3"-2"	108	44	96	12.25
	45048976	3"-2.1/2"	108	44	96	13.90
	45411432	4"-1"	-	-	-	33.45
	45411442	4"-1.1/4"	-	-	-	32.95
	45411448	4"-1.1/2"	-	-	-	32.95
	45411460	4"-2"	136	51	120	35.20
	45411476	4"-2.1/2"	136	51	120	26.10
	45411489	4"-3"	136	51	120	25.05



245Z-Verloopnippel male zwart ISO-N8

				H mm	B mm	€
	45021713Z	3/8"-1/4"	21	38	19	1.65
	45022113Z	1/2"-1/4"	27	44	24	2.30
	45022117Z	1/2"-3/8"	27	44	24	1.95
	45022717Z	3/4"-3/8"	34	47	30	3.40
	45022721Z	3/4"-1/2"	34	47	30	1.70
	45023221Z	1"-1/2"	40	53	35	3.55
	45023227Z	1"-3/4"	40	53	35	1.95
	45024221Z	1.1/4"-1/2"	51	57	45	5.20
	45024227Z	1.1/4"-3/4"	51	57	45	4.45
	45024232Z	1.1/4"-1"	51	57	45	3.25
	45024827Z	1.1/2"-3/4"	61	59	54	4.45
	45024832Z	1.1/2"-1"	61	59	54	7.25
	45024842Z	1.1/2"-1.1/4"	61	59	54	3.90
	45026032Z	2"-1"	73	68	65	6.55
	45026042Z	2"-1.1/4"	73	68	65	8.30
	45026048Z	2"-1.1/2"	73	68	65	7.60
	45027648Z	2.1/2"-1.1/2"	90	75	80	10.80
	45027660Z	2.1/2"-2"	90	75	80	18.25
	45028960Z	3"-2"	106	83	94	22.05

245-Verloopnippel male verzinkt ISO-N8

				H mm	B mm	€
	45021713	3/8"-1/4"	21	38	19	2.10
	45022113	1/2"-1/4"	27	44	24	2.80
	45022117	1/2"-3/8"	27	44	24	2.40
	45022717	3/4"-3/8"	34	47	30	4.30
	45022721	3/4"-1/2"	34	47	30	2.20
	45023217	1"-3/8"	-	-	-	4.15
	45023221	1"-1/2"	40	53	35	4.30
	45023227	1"-3/4"	40	53	35	2.40
	45024221	1.1/4"-1/2"	51	57	45	6.60
	45024227	1.1/4"-3/4"	51	57	45	5.60
	45024232	1.1/4"-1"	51	57	45	3.90
	45024821	1.1/2"-1/2"	-	-	-	6.60
	45024827	1.1/2"-3/4"	61	59	54	5.60
	45024832	1.1/2"-1"	61	59	54	9.15
	45024842	1.1/2"-1.1/4"	61	59	54	4.90
	45026021	2"-1/2"	-	-	-	9.05
	45026027	2"-3/4"	-	-	-	8.95
	45026032	2"-1"	73	68	65	8.10
	45026042	2"-1.1/4"	73	68	65	10.30
	45026048	2"-1.1/2"	73	68	65	9.30
	45027632	2.1/2"-1"	-	-	-	12.25
	45027642	2.1/2"-1.1/4"	-	-	-	13.90
	45027648	2.1/2"-1.1/2"	90	75	80	13.70
	45027660	2.1/2"-2"	90	75	80	23.10
	45028960	3"-2"	106	83	94	28.05
	45028976	3"-2.1/2"	106	89	94	34.80



246Z-Soknippel verloopend zwart ISO-M4

			H mm	B mm	€
	45081713Z	3/8"-1/4"	26	35	1.45
	45082113Z	1/2"-1/4"	32	43	1.95
	45082117Z	1/2"-3/8"	32	43	1.60
	45082717Z	3/4"-3/8"	38	48	2.55
	45082721Z	3/4"-1/2"	38	48	1.65
	45083221Z	1"-1/2"	46	55	2.65
	45083227Z	1"-3/4"	46	55	2.80
	45084227Z	1.1/4"-3/4"	56	60	5.00
	45084232Z	1.1/4"-1"	56	60	3.25
	45084832Z	1.1/2"-1"	62	63	5.95
	45084842Z	1.1/2"-1.1/4"	62	63	5.20
	45086042Z	2"-1.1/4"	75	70	8.50
	45086048Z	2"-1.1/2"	75	70	8.60

246-Soknippel verloopend verzinkt ISO-M4

			H mm	B mm	€
	45081713	3/8"-1/4"	26	35	1.85
	45082113	1/2"-1/4"	32	43	2.35
	45082117	1/2"-3/8"	32	43	2.05
	45082717	3/4"-3/8"	38	48	3.10
	45082721	3/4"-1/2"	38	48	2.10
	45083221	1"-1/2"	46	55	3.25
	45083227	1"-3/4"	46	55	3.55
	45084227	1.1/4"-3/4"	56	60	6.20
	45084232	1.1/4"-1"	56	60	3.90
	45084832	1.1/2"-1"	62	63	7.35
	45084842	1.1/2"-1.1/4"	62	63	6.40
	45086042	2"-1.1/4"	75	70	10.45
	45086048	2"-1.1/2"	75	70	11.00

# Malleabel fitwerk

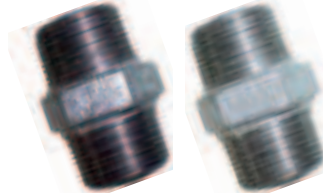


270Z-Sok female zwart ISO-M2

MALZ	W	H mm	B mm	€
45061313Z	1/4"	23	27	1.30
45061717Z	3/8"	27	30	1.20
45062121Z	1/2"	32	36	1.15
45062727Z	3/4"	38	39	1.30
45063232Z	1"	45	45	1.65
45064242Z	1.1/4"	57	50	2.70
45064848Z	1.1/2"	65	55	3.75
45066060Z	2"	75	65	5.80
45067676Z	2.1/2"	94	74	15.95
45068989Z	3"	107	80	19.10
45060114Z	4"	132	94	39.10

270-Sok female verzinkt ISO-M2

MALF	W	H mm	B mm	€
45061313	1/4"	23	27	1.65
45061717	3/8"	27	30	1.45
45062121	1/2"	32	36	1.30
45062727	3/4"	38	39	1.65
45063232	1"	45	45	2.10
45064242	1.1/4"	57	50	3.40
45064848	1.1/2"	65	55	4.80
45066060	2"	75	65	7.20
45067676	2.1/2"	94	74	19.65
45068989	3"	107	80	23.65
45060114	4"	132	94	54.30



280Z-Dubbele nippel male zwart ISO-N8

MALZ	W	C	H mm	B mm	€
45001313Z	1/4"	22	36	19	1.40
45001717Z	3/8"	25	38	22	1.65
45002121Z	1/2"	30	44	26	0.90
45002727Z	3/4"	36	47	32	1.20
45003232Z	1"	45	53	42	1.60
45004242Z	1.1/4"	55	57	49	2.70
45004848Z	1.1/2"	60	59	54	3.25
45006060Z	2"	78	68	69	5.80
45007676Z	2.1/2"	96	75	85	10.10
45008989Z	3"	112	83	100	12.15
45000114Z	4"	144	95	129	41.85

280-Dubbele nippel male verzinkt ISO-N8

MALF	W	C	H mm	B mm	€
45001313	1/4"	22	36	19	1.70
45001717	3/8"	25	38	22	2.05
45002121	1/2"	30	44	26	1.30
45002727	3/4"	36	47	32	1.45
45003232	1"	45	53	42	2.05
45004242	1.1/4"	55	57	49	3.40
45004848	1.1/2"	60	59	54	3.90
45006060	2"	78	68	69	7.20
45007676	2.1/2"	96	75	85	12.40
45008989	3"	112	83	100	15.05
45000114	4"	144	95	129	54.15



290Z-Stop met vierkante kop zwart ISO-T9

MALZ	W	C	H mm	B mm	€
45181300Z	1/4"	18	22	9	0.75
45181700Z	3/8"	22	24	10	0.70
45182100Z	1/2"	25	26	11	0.70
45182700Z	3/4"	31	32	17	0.90
45183200Z	1"	39	36	19	1.15
45184200Z	1.1/4"	49	39	23	1.90
45184800Z	1.1/2"	53	41	22	2.30
45186000Z	2"	68	48	27	4.15
45187600Z	2.1/2"	83	54	32	8.70
45188900Z	3"	95	60	36	11.35
45181140Z	4"	122	70	41	19.50

290-Stop met vierkante kop verzinkt ISO-T9

MALF	W	C	H mm	B mm	€
45181300	1/4"	18	22	9	1.00
45181700	3/8"	22	24	10	0.85
45182100	1/2"	25	26	11	0.90
45182700	3/4"	31	32	17	1.20
45183200	1"	39	36	19	1.35
45184200	1.1/4"	49	39	23	2.35
45184800	1.1/2"	53	41	22	2.80
45186000	2"	68	48	27	5.20
45187600	2.1/2"	83	54	32	10.90
45188900	3"	95	60	36	13.90
45181140	4"	122	70	41	24.60

Hydrauliek  
Snelkoppelingen  
Afsluiters  
Roestvast staal  
Fittingen  
Luchtconditionering  
Gereedschap  
Vacuümtechniek  
Pneumatiek  
Onderdelen compressoren  
Diversen

Malleabele fittingen & Staal  
Ringleidingssystemen  
Slangen  
Water, Gas, Sanitair, Verwarming

# 12 Malleabel fitwerk

Hydrauliek

Snelkoppelingen

Afsluiters

Roestvast staal

Fittingen

Luchtconditionering

Gereedschap

Vacuumtechniek

Pneumatiek

Onderdelen compressoren

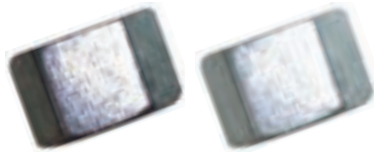
Diversen

Malleabele fittingen & Staal

Ringleidingssystemen

Slangen

Water, Gas, Sanitair, Verwarming

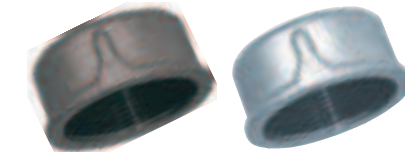


300Z-Dop zeskant zwart ISO-T1

			H mm	B mm	€
<b>45261300Z</b>	1/4"	21	15	19	<b>1.00</b>
<b>45261700Z</b>	3/8"	25	17	22	<b>0.90</b>
<b>45262100Z</b>	1/2"	30	19	27	<b>1.15</b>
<b>45262700Z</b>	3/4"	36	22	32	<b>1.30</b>
<b>45263200Z</b>	1"	47	24	42	<b>1.45</b>
<b>45264200Z</b>	1.1/4"	56	27	49	<b>2.35</b>
<b>45264800Z</b>	1.1/2"	63	27	56	<b>2.90</b>
<b>45266000Z</b>	2"	80	32	71	<b>5.20</b>
<b>45267600Z</b>	2.1/2"	96	35	85	<b>9.65</b>
<b>45268900Z</b>	3"	112	38	100	<b>10.55</b>
<b>45261140Z</b>	4"	145	45	129	<b>22.80</b>

300-Dop zeskant verzinkt ISO-T1

		H mm	B mm	€
<b>45261300</b>	1/4"	21	19	<b>1.35</b>
<b>45261700</b>	3/8"	25	22	<b>1.30</b>
<b>45262100</b>	1/2"	30	27	<b>1.40</b>
<b>45262700</b>	3/4"	36	32	<b>1.65</b>
<b>45263200</b>	1"	47	42	<b>1.85</b>
<b>45264200</b>	1.1/4"	56	49	<b>2.90</b>
<b>45264800</b>	1.1/2"	63	56	<b>3.60</b>
<b>45266000</b>	2"	80	71	<b>6.65</b>
<b>45267600</b>	2.1/2"	96	85	<b>12.05</b>
<b>45268900</b>	3"	112	100	<b>13.20</b>
<b>45261140</b>	4"	145	129	<b>28.40</b>



301Z-Dop rond zwart ISO-T2

		H mm	B mm	€
<b>45271700Z</b>	3/8"	27	17	<b>1.20</b>
<b>45272100Z</b>	1/2"	32	19	<b>1.35</b>
<b>45272700Z</b>	3/4"	38	22	<b>1.35</b>
<b>45273200Z</b>	1"	45	24	<b>1.60</b>
<b>45274200Z</b>	1.1/4"	57	27	<b>2.35</b>
<b>45274800Z</b>	1.1/2"	65	27	<b>2.90</b>
<b>45276000Z</b>	2"	75	32	<b>5.55</b>

301-Dop rond verzinkt ISO-T2

		H mm	B mm	€
<b>45271700</b>	3/8"	27	17	<b>1.65</b>
<b>45272100</b>	1/2"	32	19	<b>1.85</b>
<b>45272700</b>	3/4"	38	22	<b>1.65</b>
<b>45273200</b>	1"	45	24	<b>2.10</b>
<b>45274200</b>	1.1/4"	57	27	<b>3.10</b>
<b>45274800</b>	1.1/2"	65	27	<b>3.85</b>
<b>45276000</b>	2"	75	32	<b>7.00</b>



310Z-Sluitmoer zeskant zwart ISO-P4

		H mm	B mm	€
<b>45301300Z</b>	1/4"	26	23	<b>0.85</b>
<b>45301700Z</b>	3/8"	31	28	<b>1.00</b>
<b>45302100Z</b>	1/2"	36	32	<b>0.75</b>
<b>45302700Z</b>	3/4"	41	36	<b>0.85</b>
<b>45303200Z</b>	1"	52	46	<b>1.20</b>
<b>45304200Z</b>	1.1/4"	62	54	<b>1.70</b>
<b>45304800Z</b>	1.1/2"	68	60	<b>1.95</b>
<b>45306000Z</b>	2"	85	75	<b>4.10</b>
<b>45307600Z</b>	2.1/2"	112	98	<b>9.05</b>
<b>45308900Z</b>	3"	120	105	<b>10.45</b>

310-Sluitmoer zeskant verzinkt ISO-P4

		H mm	B mm	€
<b>45301300</b>	1/4"	26	23	<b>1.30</b>
<b>45301700</b>	3/8"	31	28	<b>1.35</b>
<b>45302100</b>	1/2"	36	32	<b>1.00</b>
<b>45302700</b>	3/4"	41	36	<b>1.05</b>
<b>45303200</b>	1"	52	46	<b>1.40</b>
<b>45304200</b>	1.1/4"	62	54	<b>2.20</b>
<b>45304800</b>	1.1/2"	68	60	<b>2.45</b>
<b>45306000</b>	2"	85	75	<b>5.05</b>
<b>45307600</b>	2.1/2"	112	98	<b>11.10</b>
<b>45308900</b>	3"	120	105	<b>13.10</b>



340Z-Driedelige koppeling conisch dichtend female zwart ISO-U11

		H mm	B mm	€
<b>46061717Z</b>	3/8"	40	36	<b>5.05</b>
<b>46062121Z</b>	1/2"	52	46	<b>4.30</b>
<b>46062727Z</b>	3/4"	56	50	<b>4.90</b>
<b>46063232Z</b>	1"	61	54	<b>5.65</b>
<b>46064242Z</b>	1.1/4"	79	70	<b>9.30</b>
<b>46064848Z</b>	1.1/2"	84	75	<b>10.90</b>
<b>46066060Z</b>	2"	98	89	<b>18.15</b>
<b>46067676Z</b>	2.1/2"	125	110	<b>39.30</b>
<b>46068989Z</b>	3"	143	129	<b>48.05</b>
<b>46061140Z</b>	4"	175	165	<b>100.90</b>

340-Driedelige koppeling conisch dichtend female verzinkt ISO-U11

		H mm	B mm	€
<b>46061717</b>	3/8"	40	36	<b>6.20</b>
<b>46062121</b>	1/2"	52	46	<b>5.30</b>
<b>46062727</b>	3/4"	56	50	<b>6.15</b>
<b>46063232</b>	1"	61	54	<b>7.00</b>
<b>46064242</b>	1.1/4"	79	70	<b>11.70</b>
<b>46064848</b>	1.1/2"	84	75	<b>13.70</b>
<b>46066060</b>	2"	98	89	<b>22.50</b>
<b>46067676</b>	2.1/2"	125	110	<b>48.60</b>
<b>46068989</b>	3"	143	129	<b>66.90</b>
<b>46061140</b>	4"	175	165	<b>134.60</b>

# Malleabel fitwerk

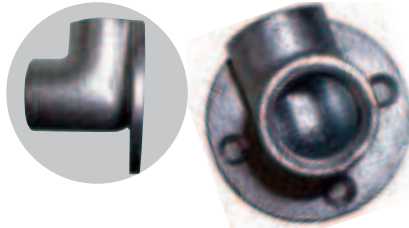


341Z-Driedelige koppeling  
conisch dichtend male / female  
zwart ISO-U12

MALZ			H mm	B mm	€
47081717Z	3/8"	40	58	36	4.40
47082121Z	1/2"	52	66	46	4.20
47082727Z	3/4"	56	72	50	5.10
47083232Z	1"	61	80	54	6.30
47084242Z	1.1/4"	79	90	70	9.95
47084848Z	1.1/2"	84	95	75	12.85
47086060Z	2"	98	106	89	20.20
47087676Z	2.1/2"	125	118	110	42.90
47088989Z	3"	143	380	129	67.05

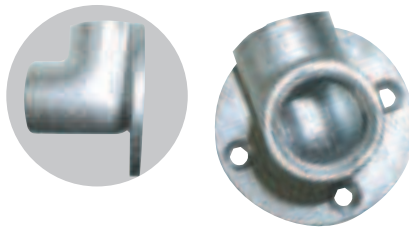
341-Driedelige koppeling  
conisch dichtend male / female  
verzinkt ISO-U12

MALF			H mm	B mm	€
47081717	3/8"	40	58	36	5.50
47082121	1/2"	52	66	46	5.50
47082727	3/4"	56	72	50	6.75
47083232	1"	61	80	54	7.90
47084242	1.1/4"	79	90	70	12.25
47084848	1.1/2"	84	95	75	15.65
47086060	2"	98	106	89	24.85
47087676	2.1/2"	125	118	110	53.00
47088989	3"	143	380	129	82.95
47080114	4"	-	-	-	149.10



471Z-Muurplaat female x female  
zwart ISO-49

MALZ		H mm	B mm	€
45472121Z	1/2"	60	43	5.55
45472727Z	3/4"	70	50	11.70



471-Muurplaat female x female  
verzinkt ISO-49

MALF		H mm	B mm	€
45472121	1/2"	60	43	6.30
45472727	3/4"	70	50	12.35



529AZ-Soknippel male / female  
zwart ISO-M4

MALZ		H mm	B mm	€
46081717Z	3/8"	26	35	1.65
46082121Z	1/2"	31	43	1.70
46082727Z	3/4"	36	48	2.55
46083232Z	1"	46	55	3.90
46084242Z	1.1/4"	56	60	5.05

529A-Soknippel male / female  
verzinkt ISO-M4

MALF		H mm	B mm	€
46081717	3/8"	26	35	2.10
46082121	1/2"	31	43	2.20
46082727	3/4"	36	48	3.10
46083232	1"	46	55	4.90
46084242	1.1/4"	56	60	6.20

Hydrauliek  
Snelkoppelingen  
Afsluiters  
Roestvast staal  
Fittingen  
Luchtconditionering  
Gereedschap  
Vacuümtechniek  
Pneumatiek  
Onderdelen compressoren  
Diversen  
Malleabele fittingen & Staal  
Ringleidingssystemen  
Slangen  
Water, Gas, Sanitair, Verwarming



# Pijpnippels - staal



## 23-Pijpnippel male x male verzinkt DIN 2982

MALF		L mm	B mm	€	MALF		L mm	B mm	€	MALF		L mm	B mm	€	
45311060	1/8"	60	-	2.30	45327040	3/4"	40	27	1.00	45348180	1,1/2"	180	48	4.55	Gereedschap
45311080	1/8"	80	-	2.70	45327060	3/4"	60	27	1.20	45348200	1,1/2"	200	48	5.00	
45313040	1/4"	40	13	1.70	45327080	3/4"	80	27	1.30	45348250	1,1/2"	250	48	6.30	Vacuüm-techniek
45313060	1/4"	60	13	2.00	45327100	3/4"	100	27	1.40	45348300	1,1/2"	300	48	7.30	
45313080	1/4"	80	13	2.30	45327120	3/4"	120	27	1.70	45360080	2"	80	60	4.15	Pneumatiek
45313100	1/4"	100	13	2.60	45327150	3/4"	150	27	1.95	45360100	2"	100	60	4.55	
45313120	1/4"	120	13	3.00	45327180	3/4"	180	27	2.35	45360120	2"	120	60	4.80	Onderdelen compressoren
45313150	1/4"	150	13	3.50	45327200	3/4"	200	27	2.55	45360150	2"	150	60	5.40	
45313180	1/4"	180	13	4.15	45327250	3/4"	250	27	2.90	45360180	2"	180	60	6.30	Diversen
45313200	1/4"	200	13	4.80	45327300	3/4"	300	27	3.80	45360200	2"	200	60	7.10	
45313250	1/4"	250	13	5.50	45332040	1"	40	32	1.40	45360250	2"	250	60	8.70	
45313300	1/4"	300	13	6.00	45332060	1"	60	32	1.50	45360300	2"	300	60	10.10	Malleabele fittingen & Staal
45317030	3/8"	30	17	1.60	45332080	1"	80	32	1.70	45376100	2,1/2"	100	76	8.20	
45317040	3/8"	40	17	1.60	45332100	1"	100	32	2.00	45376120	2,1/2"	120	76	8.60	Ringleiding-systemen
45317060	3/8"	60	17	1.70	45332120	1"	120	32	2.10	45376150	2,1/2"	150	76	10.10	
45317080	3/8"	80	17	1.85	45332150	1"	150	32	2.40	45376180	2,1/2"	180	76	10.90	Slangen
45317100	3/8"	100	17	2.00	45332180	1"	180	32	3.05	45376200	2,1/2"	200	76	12.00	
45317120	3/8"	120	17	2.30	45332200	1"	200	32	3.45	45376250	2,1/2"	250	76	14.60	Water, Gas, Sanitair, Verwarming
45317150	3/8"	150	17	2.70	45332250	1"	250	32	4.15	45376300	2,1/2"	300	76	16.70	
45317180	3/8"	180	17	3.15	45332300	1"	300	32	4.95	45389100	3"	100	89	10.80	
45317200	3/8"	200	17	3.80	45342060	1,1/4"	60	42	2.05	45389120	3"	120	89	11.70	
45317250	3/8"	250	17	4.60	45342080	1,1/4"	80	42	2.10	45389150	3"	150	89	12.70	
45317300	3/8"	300	17	5.80	45342100	1,1/4"	100	42	2.30	45389180	3"	180	89	14.20	
45321030	1/2"	30	21	1.70	45342120	1,1/4"	120	42	2.45	45389200	3"	200	89	15.90	
45321040	1/2"	40	21	0.90	45342150	1,1/4"	150	42	3.05	45389250	3"	250	89	18.90	
45321060	1/2"	60	21	1.10	45342180	1,1/4"	180	42	3.80	45389300	3"	300	89	21.50	
45321080	1/2"	80	21	1.20	45342200	1,1/4"	200	42	4.25	45314100	4"	100	141	16.10	
45321100	1/2"	100	21	1.25	45342250	1,1/4"	250	42	5.35	45314120	4"	120	141	18.10	
45321120	1/2"	120	21	1.40	45342300	1,1/4"	300	42	6.05	45314150	4"	150	141	20.60	
45321150	1/2"	150	21	1.70	45348060	1,1/2"	60	48	2.35	45314180	4"	180	141	22.50	
45321180	1/2"	180	21	2.10	45348080	1,1/2"	80	48	2.50	45314200	4"	200	141	24.50	
45321200	1/2"	200	21	2.35	45348100	1,1/2"	100	48	2.70	45314250	4"	250	141	26.60	
45321250	1/2"	250	21	2.70	45348120	1,1/2"	120	48	2.95	45314300	4"	300	141	32.25	
45321300	1/2"	300	21	3.05	45348150	1,1/2"	150	48	3.70						

Hydrauliek  
Snelkoppelingen  
Afsluiters  
Roestvast staal  
Fittingen  
Luchtconditionering  
Gereedschap  
Vacuüm-techniek  
Pneumatiek  
Onderdelen compressoren  
Diversen  
Malleabele fittingen & Staal  
Ringleiding-systemen  
Slangen  
Water, Gas, Sanitair, Verwarming

# 12 Lasbochten en lassokken (Staal 37.0.S)

Hydrauliek  
 Materiaal: Normaal wandig staal 37.0.S (naadloos)  
 Kwaliteitscontrole: T.U.V. Quality systems. Fabricage volgens DIN.  
 Oppervlaktebehandeling: Zwart

Snelkoppelingen  
 Afsluiters  
 Roestvast staal  
 Fittingen  
 Luchtconditionering

Barstdruk: 80      Werkdruk: 30 (bij +20°C)

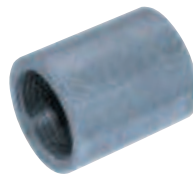


Lasbocht 90° - zwart DIN 2605

Lassok egaal / female - DIN 2986

Gereedschap	MALZ	Weg	OD mm	mm	€
Vacuumtechniek	45192100Z	1/2"	21,3	2,0	2.20
	45192700Z	3/4"	26,9	2,3	2.25
Pneumatiek	45193200Z	1"	33,7	2,6	2.55
	45194200Z	1.1/4"	42,4	2,6	3.00
Onderdelen compressoren	45194800Z	1.1/2"	48,3	2,6	3.60
	45194900Z	51	51,0	2,6	8.30
	45196000Z	2"	60,3	2,9	5.80
Diversen	45197600Z	2.1/2"	76,1	2,9	8.00
	45198600Z	3"	88,9	3,2	11.70
Malleabele fittingen & Staal	45198700Z	101	101,6	3,6	18.90
	45198900Z	108	108,0	3,6	19.65
	45191140Z	4"	114,3	3,6	20.60

Gereedschap	MALZ	Weg	OD mm	mm	€
	45161000Z	1/8"	14,7	17	0.70
	45161300Z	1/4"	18,4	25	0.70
	45161700Z	3/8"	21,4	26	0.80
	45162100Z	1/2"	26,8	34	0.80
	45162700Z	3/4"	32,0	36	1.20
	45163200Z	1"	39,7	43	1.85
	45164200Z	1.1/4"	48,7	48	2.40
	45164800Z	1.1/2"	55,3	48	2.95
	45166000Z	2"	66,2	56	4.35
	45167600Z	2.1/2"	82,6	65	7.60
	45168900Z	3"	95,5	71	11.20
	45161140Z	4"	122,0	83	19.10



Lasbocht 45° - zwart DIN 2605

Smeedijzeren lassok egaal / female - DIN 2986

Gereedschap	MALZ	Weg	OD mm	mm	€
	46192100Z	1/2"	21,3	2,0	2.55
	46192700Z	3/4"	26,9	2,3	2.60
	46193200Z	1"	33,7	2,6	3.10
	46194200Z	1.1/4"	42,4	2,6	4.10
	46194800Z	1.1/2"	48,3	2,6	4.65
	46194900Z	51	51,0	2,6	7.00
	46196000Z	2"	60,3	2,9	7.05
	46197600Z	2.1/2"	76,1	2,9	11.60
	46198600Z	3"	88,9	3,2	15.80
	46198900Z	108	108,0	3,6	23.40
	46191140Z	4"	114,3	3,6	26.05

Gereedschap	MALF	BSPP	€
	MIWRSG-18	1/8"	2.50
	MIWRSG-14	1/4"	1.30
	MIWRSG-38	3/8"	1.50
	MIWRSG-12	1/2"	1.40
	MIWRSG-34	3/4"	3.75
	MIWRSG-1	1"	2.80
	MIWRSG-114	1.1/4"	4.45
	MIWRSG-112	1.1/2"	5.80
	MIWRSG-2	2"	8.55
	MIWRSG-212	2.1/2"	12.80
	MIWRSG-3	3"	96.05
	MIWRSG-4	4"	33.00

# Naadloze lasfittingen - DIN



## DIN 2605 DIN 2617

Meer info: technisch datablad 543.

In de tabellen zijn de nominale pijpdiameters weergegeven. Voor deze diameters gelden de volgende buitenmaat en wanddikte:

ID mm	-ID-	OD mm	(mm)
15	1/2"	21,3	2,0
20	3/4"	26,9	2,3
25	1"	33,7	2,6
32	1.1/4"	42,4	2,6
40	1.1/2"	48,3	2,6

ID mm	-ID-	OD mm	(mm)
50	2"	60,3	2,9
65	2.1/2"	76,1	2,9
80	3"	88,9	3,2
100	4"	114,3	3,6

Hydrauliek

Snelkoppelingen

Afsluiters

Roestvast staal

Fittingen

Luchtconditionering

Gereedschap

Vacuümtechniek

Pneumatiek

Onderdelen compressoren

Diversen

Malleabele fittingen & Staal

Ringleidingssystemen

Slangen

Water, Gas, Sanitair, Verwarming

## U-lasbocht



BWF3-1-DIN	1"	4.95
BWF3-114-DIN	1.1/4"	5.70
BWF3-112-DIN	1.1/2"	6.30
BWF3-2-DIN	2"	10.75
BWF3-3-DIN	3"	21.60
BWF3-4-DIN	4"	40.30

## Las kap



BWF8-12-DIN	1/2"	2.55
BWF8-1-DIN	1"	2.70
BWF8-114-DIN	1.1/4"	3.45
BWF8-112-DIN	1.1/2"	3.80
BWF8-4-DIN	4"	15.80

## Gelijke las tee



BWF4-1-DIN	1"	26.55
BWF4-112-DIN	1.1/2"	32.00
BWF4-2-DIN	2"	33.20
BWF4-212-DIN	2.1/2"	60.90
BWF4-3-DIN	3"	65.75
BWF4-4-DIN	4"	76.00

## Verlopende las tee



BWF5-12-34-DIN	1/2"	3/4"	5.20
BWF5-112-114-DIN	1.1/2"	1.1/4"	7.90
BWF5-2-12-DIN	2"	1/2"	10.35
BWF5-2-114-DIN	2"	1.1/4"	10.35
BWF5-212-114-DIN	2.1/2"	1.1/4"	15.10
BWF5-212-112-DIN	2.1/2"	1.1/2"	15.10
BWF5-3-112-DIN	3"	1.1/2"	21.85
BWF5-3-2-DIN	3"	2"	21.85
BWF5-4-212-DIN	4"	2.1/2"	35.45

## Lasverloop concentrisch



BWF6-34-12-DIN	3/4"	1/2"	4.05
BWF6-114-34-DIN	1.1/4"	3/4"	6.00
BWF6-112-12-DIN	1.1/2"	1/2"	6.50
BWF6-112-1-DIN	1.1/2"	1"	6.00
BWF6-112-114-DIN	1.1/2"	1.1/4"	5.00
BWF6-2-1-DIN	2"	1"	8.00
BWF6-2-114-DIN	2"	1.1/4"	7.50
BWF6-2-112-DIN	2"	1.1/2"	6.50
BWF6-212-114-DIN	2.1/2"	1.1/4"	7.15
BWF6-212-112-DIN	2.1/2"	1.1/2"	8.35
BWF6-212-2-DIN	2.1/2"	2"	8.55
BWF6-3-114-DIN	3"	1.1/4"	11.95
BWF6-3-112-DIN	3"	1.1/2"	13.95
BWF6-3-2-DIN	3"	2"	14.95
BWF6-3-212-DIN	3"	2.1/2"	15.50
BWF6-4-2-DIN	4"	2"	15.95
BWF6-4-212-DIN	4"	2.1/2"	16.95
BWF6-4-3-DIN	4"	3"	17.50

## Lasverloop excentrisch



BWF7-112-12-DIN	1.1/2"	1/2"	6.70
BWF7-112-34-DIN	1.1/2"	3/4"	6.70
BWF7-112-1-DIN	1.1/2"	1"	7.15
BWF7-112-114-DIN	1.1/2"	1.1/4"	7.35
BWF7-2-114-DIN	2"	1.1/4"	9.25
BWF7-212-112-DIN	2.1/2"	1.1/2"	10.90
BWF7-3-2-DIN	3"	2"	15.10
BWF7-3-212-DIN	3"	2.1/2"	15.55
BWF7-4-212-DIN	4"	2.1/2"	17.65
BWF7-4-3-DIN	4"	3"	18.50

# 12 Georg Fischer malleabele fitwerk



# +GF+

## Hydrauliek Snelkoppelingen Afsluiters Roestvast staal Fittingen Luchtconditionering Gereedschap Vacuümtechniek Pneumatiek Onderdelen compressoren Diversen Malleabele fittingen & Staal

### 1-Bocht 90° male x female



Zwart - BSPT male x BSP female

	0217	BSPP	€
GF1-14N	1/4"		4.80
GF1-38N	3/8"		5.75
GF1-12N	1/2"		5.15
GF1-34N	3/4"		8.95
GF1-1N	1"		12.10
GF1-114N	1.1/4"		21.45
GF1-112N	1.1/2"		27.70
GF1-2N	2"		45.85
GF1-212N	2.1/2"		135.70
GF1-3N	3"		129.65
GF1-4N	4"		235.30

Gegalvaniseerd - BSPT male x BSP female

	0217	BSPP	€
GF1-14	1/4"		5.95
GF1-38	3/8"		7.30
GF1-12	1/2"		6.45
GF1-34	3/4"		11.35
GF1-1	1"		15.40
GF1-114	1.1/4"		26.70
GF1-112	1.1/2"		35.30
GF1-2	2"		56.90
GF1-212	2.1/2"		128.00
GF1-3	3"		164.20
GF1-4	4"		404.30

### 2-Bocht 90° female



Zwart - BSP female

	0217	BSPP	€
GF2-14N	1/4"		7.00
GF2-38N	3/8"		7.55
GF2-12N	1/2"		5.90
GF2-34N	3/4"		9.20
GF2-1N	1"		12.10
GF2-114N	1.1/4"		21.50
GF2-112N	1.1/2"		26.60
GF2-2N	2"		36.65
GF2-212N	2.1/2"		138.00
GF2-3N	3"		127.85
GF2-4N	4"		242.25

Gegalvaniseerd - BSP female

	0217	BSPP	€
GF2-14	1/4"		8.60
GF2-38	3/8"		7.30
GF2-12	1/2"		7.40
GF2-34	3/4"		11.40
GF2-1	1"		15.40
GF2-114	1.1/4"		26.80
GF2-112	1.1/2"		32.90
GF2-2	2"		45.70
GF2-212	2.1/2"		128.70
GF2-3	3"		161.80
GF2-4	4"		306.80

### 2a-Korte bocht 90° female



Zwart - BSP female

	0217	BSPP	€
GF2A-14N	1/4"		7.75
GF2A-38N	3/8"		6.50
GF2A-12N	1/2"		6.05
GF2A-34N	3/4"		8.15
GF2A-1N	1"		12.80
GF2A-114N	1.1/4"		19.00
GF2A-112N	1.1/2"		26.15
GF2A-2N	2"		41.20
GF2A-212N	2.1/2"		77.45
GF2A-3N	3"		133.70
GF2A-4N	4"		282.30

Gegalvaniseerd - BSP female

	0217	BSPP	€
GF2A-14	1/4"		9.60
GF2A-38	3/8"		7.90
GF2A-12	1/2"		6.50
GF2A-34	3/4"		10.60
GF2A-1	1"		16.40
GF2A-114	1.1/4"		24.70
GF2A-112	1.1/2"		33.20
GF2A-2	2"		53.40
GF2A-212	2.1/2"		97.80
GF2A-3	3"		169.25
GF2A-4	4"		357.55



# +GF+

# Georg Fischer malleabel fitwerk



# +GF+ 12

## 3-Bocht 90° male



Zwart - BSPT male

Product	Size	Price (€)
GF3-12N	1/2"	8.95
GF3-34N	3/4"	10.10
GF3-1N	1"	14.55
GF3-114N	1.1/4"	37.10
GF3-112N	1.1/2"	39.00
GF3-2N	2"	52.50

Gegalvaniseerd - BSPT male

Product	Size	Price (€)
GF3-12	1/2"	11.25
GF3-34	3/4"	12.65
GF3-1	1"	18.10
GF3-114	1.1/4"	47.10
GF3-112	1.1/2"	66.70
GF3-2	2"	90.10

## 60-U-bocht female



Zwart - BSP female

Product	Size	Price (€)
GF60-12N	1/2"	25.05
GF60-34N	3/4"	38.20
GF60-1N	1"	48.65
GF60-114N	1.1/4"	67.05
GF60-112N	1.1/2"	79.30
GF60-2N	2"	121.10

Gegalvaniseerd - BSP female

Product	Size	Price (€)
GF60-12	1/2"	31.55
GF60-34	3/4"	48.30
GF60-1	1"	45.30
GF60-114	1.1/4"	84.70
GF60-112	1.1/2"	100.20
GF60-2	2"	153.05

## 40-Bocht 45° male x female



Zwart - BSPT male x BSP female

Product	Size	Price (€)
GF40-12N	1/2"	5.90
GF40-34N	3/4"	7.90
GF40-1N	1"	11.35
GF40-114N	1.1/4"	19.55
GF40-112N	1.1/2"	23.45
GF40-2N	2"	36.95

Gegalvaniseerd - BSPT male x BSP female

Product	Size	Price (€)
GF40-12	1/2"	7.40
GF40-34	3/4"	9.90
GF40-1	1"	13.95
GF40-114	1.1/4"	24.35
GF40-112	1.1/2"	29.05
GF40-2	2"	46.00

Hydrauliek  
Snelkoppelingen  
Afsluiters  
Roestvast staal  
Fittingen  
Luchtconditioning  
Gereedschap  
Vacuumtechniek  
Pneumatiek  
Onderdelen compressoren  
Diversen  
Malleabele fittingen & Staal  
Ringleidingssystemen  
Slangen  
Water, Gas, Sanitair, Verwarming

## 90-Verloopknie 90° female



A

Zwart - BSP female

Product	Size A	Size B	Price (€)
GF90-38-14N	3/8"	1/4"	6.70
GF90-12-14N	1/2"	1/4"	8.10
GF90-12-38N	1/2"	3/8"	3.50
GF90-34-12N	3/4"	1/2"	4.20
GF90-10-12N	1"	1/2"	5.50
GF90-1-34N	1"	3/4"	6.10
GF90-114-1N	1.1/4"	1"	9.80



A

Gegalvaniseerd - BSP female

Product	Size A	Size B	Price (€)
GF90-38-14	3/8"	1/4"	8.15
GF90-12-14	1/2"	1/4"	10.10
GF90-12-38	1/2"	3/8"	5.90
GF90-34-12	3/4"	1/2"	6.70
GF90-1-12	1"	1/2"	7.15
GF90-1-34	1"	3/4"	7.60
GF90-114-1	1.1/4"	1"	12.25

# 12 Georg Fischer malleabel fitwerk



# +GF+

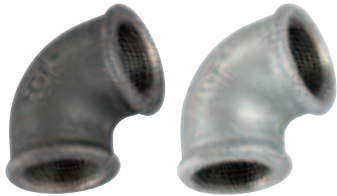
## Hydrauliek 90-Knie 90° female

Snelkoppelingen

Afsluiters

Roestvast staal

Fittingen



Zwart - BSP female

	0217	BSPP	€
GF90-18N	1/8"		3.85
GF90-14N	1/4"		3.20
GF90-38N	3/8"		2.60
GF90-12N	1/2"		1.75
GF90-34N	3/4"		2.85
GF90-1N	1"		4.35
GF90-114N	1.1/4"		8.30
GF90-112N	1.1/2"		13.30
GF90-2N	2"		15.40
GF90-212N	2.1/2"		45.25
GF90-3N	3"		63.00
GF90-4N	4"		111.10

Gegalvaniseerd - BSP female

	0217	BSPP	€
GF90-18	1/8"		6.40
GF90-14	1/4"		3.85
GF90-38	3/8"		3.40
GF90-12	1/2"		2.40
GF90-34	3/4"		3.75
GF90-1	1"		5.50
GF90-114	1.1/4"		10.30
GF90-112	1.1/2"		16.65
GF90-2	2"		19.55
GF90-212	2.1/2"		57.25
GF90-3	3"		78.45

## 92-Knie 90° male x female



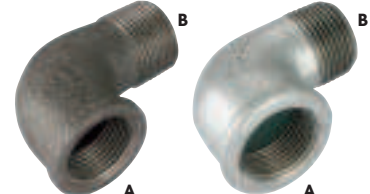
Zwart - BSPT male x BSP female

	0217	BSPT	BSPP	€
GF92-18N	1/8"			4.45
GF92-14N	1/4"			3.35
GF92-38N	3/8"			3.20
GF92-12N	1/2"			2.25
GF92-34N	3/4"			3.45
GF92-1N	1"			5.55
GF92-114N	1.1/4"			9.85
GF92-112N	1.1/2"			14.45
GF92-2N	2"			18.80
GF92-212N	2.1/2"			47.50
GF92-3N	3"			62.50
GF92-4N	4"			105.00

Gegalvaniseerd - BSPT male x BSP female

	0217	BSPT	BSPP	€
GF92-18	1/8"			5.70
GF92-14	1/4"			4.20
GF92-38	3/8"			3.85
GF92-12	1/2"			2.75
GF92-34	3/4"			4.30
GF92-1	1"			7.20
GF92-114	1.1/4"			12.05
GF92-112	1.1/2"			18.05
GF92-2	2"			23.80
GF92-212	2.1/2"			59.00
GF92-3	3"			77.80

## 92-Verloopknie 90° male x female



Zwart - BSPT male x BSP female

	0217	BSPT	BSPP	€
GF92-34-12N	3/4"	1/2"		11.75
GF92-1-34N	1"	3/4"		11.50

Gegalvaniseerd - BSPT male x BSP female

	0217	BSPT	BSPP	€
GF92-34-12	3/4"	1/2"		14.75
GF92-1-34	1"	3/4"		19.20

## 96-Driedelige knie female

CONISCHE DICHTING



Zwart - BSP female

	0217	BSPP	€
GF96-12N	1/2"		12.55
GF96-34N	3/4"		14.50
GF96-1N	1"		20.95
GF96-114N	1.1/4"		35.30
GF96-112N	1.1/2"		41.40
GF96-2N	2"		69.90

Gegalvaniseerd - BSP female

	0217	BSPP	€
GF96-12	1/2"		15.85
GF96-34	3/4"		18.30
GF96-1	1"		26.30
GF96-114	1.1/4"		43.90
GF96-112	1.1/2"		52.40
GF96-2	2"		88.40



## 98-Driedelige knie male x female

CONISCHE  
DICHTING



Zwart -  
BSPT male x BSP female



GF98-12N	1/2"	12.65
GF98-34N	3/4"	16.10
GF98-1N	1"	22.00
GF98-114N	1.1/4"	36.60
GF98-112N	1.1/2"	45.75
GF98-2N	2"	74.40

Gegalvaniseerd -  
BSPT male x BSP female



GF98-12	1/2"	15.90
GF98-34	3/4"	20.20
GF98-1	1"	27.70
GF98-114	1.1/4"	46.50
GF98-112	1.1/2"	56.90
GF98-2	2"	94.10

## 130-Tee female



Zwart - BSP female



GF130-18N	1/8"	4.90
GF130-14N	1/4"	4.35
GF130-38N	3/8"	3.85
GF130-12N	1/2"	2.55
GF130-34N	3/4"	4.35
GF130-1N	1"	6.35
GF130-114N	1.1/4"	11.35
GF130-112N	1.1/2"	17.30
GF130-2N	2"	24.90
GF130-212N	2.1/2"	56.15
GF130-3N	3"	75.10
GF130-4N	4"	144.50

Gegalvaniseerd - BSP female



GF130-18	1/8"	8.25
GF130-14	1/4"	5.50
GF130-38	3/8"	4.75
GF130-12	1/2"	3.20
GF130-34	3/4"	5.50
GF130-1	1"	8.10
GF130-114	1.1/4"	14.05
GF130-112	1.1/2"	21.75
GF130-2	2"	30.55
GF130-212	2.1/2"	69.90
GF130-3	3"	93.30
GF130-4	4"	182.90

## 130-Verloop tee female



Zwart - BSP female



GF130-38-14N	3/8"	1/4"	10.70
GF130-12-14N	1/2"	1/4"	8.35
GF130-12-38N	1/2"	3/8"	5.05
GF130-12-34N	1/2"	3/4"	5.50
GF130-34-14N	3/4"	1/4"	11.50
GF130-34-38N	3/4"	3/8"	6.00
GF130-34-12N	3/4"	1/2"	4.55
GF130-34-1N	3/4"	1"	9.70
GF130-1-38N	1"	3/8"	13.70
GF130-1-12N	1"	1/2"	5.95
GF130-1-34N	1"	3/4"	6.45
GF130-1-114N	1"	1.1/4"	14.80
GF130-1-112N	1"	1.1/2"	18.45
GF130-114-12N	1.1/4"	1/2"	9.90
GF130-114-34N	1.1/4"	3/4"	10.75
GF130-114-1N	1.1/4"	1"	11.75
GF130-112-12N	1.1/2"	1/2"	13.30
GF130-112-34N	1.1/2"	3/4"	19.50
GF130-112-1N	1.1/2"	1"	15.60
GF130-112-114N	1.1/2"	1.1/4"	41.70
GF130-112-2N	1.1/2"	2"	29.15
GF130-2-12N	2"	1/2"	19.60
GF130-2-34N	2"	3/4"	25.50
GF130-2-1N	2"	1"	20.05
GF130-2-114N	2"	1.1/4"	25.50
GF130-2-112N	2"	1.1/2"	29.95

Gegalvaniseerd - BSP female



GF130-38-14	3/8"	1/4"	13.45
GF130-12-14	1/2"	1/4"	10.70
GF130-12-38	1/2"	3/8"	6.15
GF130-12-34	1/2"	3/4"	7.00
GF130-34-14	3/4"	1/4"	14.35
GF130-34-38	3/4"	3/8"	10.15
GF130-34-12	3/4"	1/2"	5.75
GF130-34-1N	3/4"	1"	16.00
GF130-1-38	1"	3/8"	17.40
GF130-1-12	1"	1/2"	7.50
GF130-1-34	1"	3/4"	8.10
GF130-1-114	1"	1.1/4"	18.65
GF130-1-112	1"	1.1/2"	23.40
GF130-114-12	1.1/4"	1/2"	12.55
GF130-114-34	1.1/4"	3/4"	13.20
GF130-114-1	1.1/4"	1"	14.80
GF130-112-12	1.1/2"	1/2"	16.80
GF130-112-34	1.1/2"	3/4"	18.20
GF130-112-1	1.1/2"	1"	19.65
GF130-112-114	1.1/2"	1.1/4"	52.95
GF130-112-2	1.1/2"	2"	36.85
GF130-2-12	2"	1/2"	24.80
GF130-2-34	2"	3/4"	32.30
GF130-2-1	2"	1"	25.05
GF130-2-114	2"	1.1/4"	32.30
GF130-2-112	2"	1.1/2"	37.25

Hydrauliek  
Snelkoppelingen  
Afsluiters  
Roestvast staal  
Fittingen  
Luchtconditionering  
Gereedschap  
Vacuümtechniek  
Pneumatiek  
Onderdelen compressoren  
Diversen

Malleabele fittingen & Staal  
Ringleidingssystemen  
Slangen  
Water, Gas, Sanitair, Verwarming

# 12 Georg Fischer malleabel fitwerk



# +GF+

## Hydrauliek 130-Verloop tee female

Snelkoppelingen  
Afsluiters  
Roestvast staal  
Fittingen



Zwart - BSP female

	0217	BSPP	BSPP	BSPP	€
<b>Gereedschap</b>					
<b>GF130-12-38-38N</b>		1/2"	3/8"	3/8"	<b>7.80</b>
<b>GF130-34-12-12N</b>		3/4"	1/2"	1/2"	<b>4.90</b>
<b>GF130-34-12-34N</b>		3/4"	3/4"	1/2"	<b>5.75</b>
<b>GF130-1-12-1N</b>		1"	1"	1/2"	<b>7.80</b>
<b>GF130-1-34-12N</b>		1"	1/2"	3/4"	<b>7.30</b>
<b>GF130-1-34-34N</b>		1"	3/4"	3/4"	<b>7.40</b>
<b>GF130-1-34-1N</b>		1"	1"	3/4"	<b>8.50</b>
<b>GF130-114-12114N</b>		1.1/4"	1.1/4"	1/2"	<b>15.35</b>
<b>GF130-114-1-12N</b>		1.1/4"	1/2"	1"	<b>11.65</b>
<b>GF130-114-1-34N</b>		1.1/4"	3/4"	1"	<b>13.70</b>
<b>GF130-114-1-1N</b>		1.1/4"	1"	1"	<b>13.30</b>
<b>GF130-114-1-114N</b>		1.1/4"	1.1/4"	1"	<b>14.80</b>
<b>GF130-112-12112N</b>		1.1/2"	1.1/2"	1/2"	<b>29.80</b>
<b>GF130-112-1-1N</b>		1.1/2"	1"	1"	<b>18.00</b>
<b>GF130-112-1-112N</b>		1.1/2"	1.1/2"	1"	<b>24.90</b>
<b>GF130-112-11412N</b>		1.1/2"	1/2"	1.1/4"	<b>15.35</b>
<b>GF130-112-114-1N</b>		1.1/2"	1"	1.1/4"	<b>17.70</b>
<b>GF130-112114114N</b>		1.1/2"	1.1/4"	1.1/4"	<b>21.65</b>
<b>GF130-2-12-2N</b>		2"	2"	1/2"	<b>66.50</b>
<b>GF130-2-34-2N</b>		2"	2"	3/4"	<b>42.30</b>
<b>GF130-2-1-2N</b>		2"	2"	1"	<b>40.80</b>
<b>GF130-2-112-1N</b>		2"	1"	1.1/2"	<b>28.15</b>
<b>GF130-2-112-114N</b>		2"	1.1/4"	1.1/2"	<b>28.00</b>
<b>GF130-2-112-112N</b>		2"	1.1/2"	1.1/2"	<b>30.95</b>
<b>GF130-2-112-2N</b>		2"	2"	1.1/2"	<b>121.10</b>
<b>GF130-212112212N</b>		2.1/2"	2.1/2"	1.1/2"	<b>141.55</b>
<b>GF130-212-2-2N</b>		2.1/2"	2"	2"	<b>91.90</b>



Gegalvaniseerd - BSP female

	0217	BSPP	BSPP	BSPP	€
<b>Gereedschap</b>					
<b>GF130-12-38-38</b>		1/2"	3/8"	3/8"	<b>9.80</b>
<b>GF130-34-12-12</b>		3/4"	1/2"	1/2"	<b>6.15</b>
<b>GF130-34-12-34</b>		3/4"	3/4"	1/2"	<b>7.30</b>
<b>GF130-1-12-1</b>		1"	1"	1/2"	<b>9.85</b>
<b>GF130-1-34-12</b>		1"	1/2"	3/4"	<b>12.45</b>
<b>GF130-1-34-34</b>		1"	3/4"	3/4"	<b>12.65</b>
<b>GF130-1-34-1</b>		1"	1"	3/4"	<b>14.60</b>
<b>GF130-114-12-114</b>		1.1/4"	1.1/4"	1/2"	<b>26.05</b>
<b>GF130-114-1-12</b>		1.1/4"	1/2"	1"	<b>14.55</b>
<b>GF130-114-1-34</b>		1.1/4"	3/4"	1"	<b>17.00</b>
<b>GF130-114-1-1</b>		1.1/4"	1"	1"	<b>16.60</b>
<b>GF130-114-1-114</b>		1.1/4"	1.1/4"	1"	<b>18.85</b>
<b>GF130-112-12-112</b>		1.1/2"	1.1/2"	1/2"	<b>38.35</b>
<b>GF130-112-1-1</b>		1.1/2"	1"	1"	<b>30.65</b>
<b>GF130-112-1-112</b>		1.1/2"	1.1/2"	1"	<b>31.40</b>
<b>GF130-112-11412</b>		1.1/2"	1/2"	1.1/4"	<b>19.50</b>
<b>GF130-112-114-1</b>		1.1/2"	1"	1.1/4"	<b>22.25</b>
<b>GF130-112-114114</b>		1.1/2"	1.1/4"	1.1/4"	<b>27.60</b>
<b>GF130-2-12-2</b>		2"	2"	1/2"	<b>83.65</b>
<b>GF130-2-34-2</b>		2"	2"	3/4"	<b>53.70</b>
<b>GF130-2-1-2</b>		2"	2"	1"	<b>38.00</b>
<b>GF130-2-112-1</b>		2"	1"	1.1/2"	<b>35.45</b>
<b>GF130-2-112-114</b>		2"	1.1/4"	1.1/2"	<b>35.15</b>
<b>GF130-2-112-112</b>		2"	1.1/2"	1.1/2"	<b>38.95</b>
<b>GF130-2-112-2</b>		2"	2"	1.1/2"	<b>153.15</b>
<b>GF130-212-112212</b>		2.1/2"	2.1/2"	1.1/2"	<b>175.70</b>
<b>GF130-212-2-2</b>		2.1/2"	2"	2"	<b>116.30</b>
<b>GF130-3-2-2</b>		3"	2"	2"	<b>142.55</b>

## 132-Stroom tee female



Zwart - BSP female

	0217	BSPP	€
<b>Gereedschap</b>			
<b>GF132-12N</b>		1/2"	<b>18.40</b>
<b>GF132-34N</b>		3/4"	<b>20.00</b>
<b>GF132-1N</b>		1"	<b>32.10</b>
<b>GF132-114N</b>		1.1/4"	<b>55.25</b>
<b>GF132-112N</b>		1.1/2"	<b>69.65</b>
<b>GF132-2N</b>		2"	<b>89.05</b>

Gegalvaniseerd - BSP female

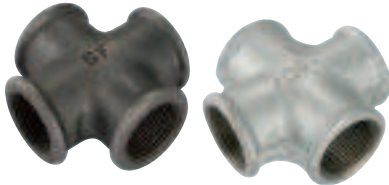
	0217	BSPP	€
<b>Gereedschap</b>			
<b>GF132-12</b>		1/2"	<b>22.90</b>
<b>GF132-34</b>		3/4"	<b>25.25</b>
<b>GF132-1</b>		1"	<b>40.40</b>
<b>GF132-114</b>		1.1/4"	<b>69.65</b>
<b>GF132-112</b>		1.1/2"	<b>88.10</b>
<b>GF132-2</b>		2"	<b>112.55</b>

# Georg Fischer malleabel fitwerk



# +GF+ 12

## 180-Kruis female



Zwart - BSP female

0217	BSPP	€
GF180-12N	1/2"	8.80
GF180-34N	3/4"	18.40
GF180-1N	1"	16.60
GF180-114N	1.1/4"	22.00
GF180-112N	1.1/2"	29.15
GF180-2N	2"	43.45
GF180-3N	3"	153.55

Gegalvaniseerd - BSP female

0217	BSPP	€
GF180-12	1/2"	11.10
GF180-34	3/4"	16.60
GF180-1	1"	20.55
GF180-114	1.1/4"	27.60
GF180-112	1.1/2"	36.85
GF180-2	2"	54.95
GF180-3	3"	194.45

## 240-Verloopsok



Zwart - BSP female

0217	BSPP	BSPP	€
GF240-14-18N*	1/4"	1/8"	4.20
GF240-38-14N*	3/8"	1/4"	3.55
GF240-12-14N	1/2"	1/4"	3.80
GF240-12-38N	1/2"	3/8"	3.35
GF240-34-38N	3/4"	3/8"	4.35
GF240-34-12N	3/4"	1/2"	3.65
GF240-1-12N	1"	1/2"	4.70
GF240-1-34N	1"	3/4"	4.25
GF240-114-12N	1.1/4"	1/2"	8.70
GF240-114-34N	1.1/4"	3/4"	7.80
GF240-114-1N	1.1/4"	1"	7.70
GF240-112-12N	1.1/2"	1/2"	13.90
GF240-112-34N	1.1/2"	3/4"	12.10
GF240-112-1N	1.1/2"	1"	9.35
GF240-112-114N	1.1/2"	1.1/4"	10.20
GF240-2-34N	2"	3/4"	27.10
GF240-2-1N	2"	1"	18.05
GF240-2-114N	2"	1.1/4"	16.30
GF240-2-112N	2"	1.1/2"	15.35
GF240-212-112N	2.1/2"	1.1/2"	65.90
GF240-212-2N	2.1/2"	2"	42.00
GF240-3-112N	3"	1.1/2"	60.35
GF240-3-2N	3"	2"	65.15
GF240-3-212N	3"	2.1/2"	100.70
GF240-4-2N	4"	2"	112.55
GF240-4-212N	4"	2.1/2"	159.70
GF240-4-3N	4"	3"	120.60

Gegalvaniseerd - BSP female

0217	BSPP	BSPP	€
GF240-14-18*	1/4"	1/8"	5.15
GF240-38-14*	3/8"	1/4"	4.65
GF240-12-14	1/2"	1/4"	4.80
GF240-12-38	1/2"	3/8"	3.95
GF240-34-38	3/4"	3/8"	5.55
GF240-34-12	3/4"	1/2"	4.70
GF240-1-12	1"	1/2"	5.90
GF240-1-34	1"	3/4"	5.35
GF240-114-12	1.1/4"	1/2"	11.25
GF240-114-34	1.1/4"	3/4"	9.90
GF240-114-1	1.1/4"	1"	9.70
GF240-112-12	1.1/2"	1/2"	23.65
GF240-112-34	1.1/2"	3/4"	15.40
GF240-112-1	1.1/2"	1"	11.75
GF240-112-114	1.1/2"	1.1/4"	12.85
GF240-2-34	2"	3/4"	25.05
GF240-2-1	2"	1"	23.05
GF240-2-114	2"	1.1/4"	20.40
GF240-2-112	2"	1.1/2"	19.30
GF240-212-112	2.1/2"	1.1/2"	83.40
GF240-212-2	2.1/2"	2"	52.20
GF240-3-112	3"	1.1/2"	76.35
GF240-3-2	3"	2"	82.30
GF240-3-212	3"	2.1/2"	100.70
GF240-4-2	4"	2"	193.15
GF240-4-212	4"	2.1/2"	201.95
GF240-4-3	4"	3"	207.15

\* Deze artikelen zijn van gegalvaniseerd staal, en daardoor niet bruikbaar in drinkwater installaties.

Hydrauliek  
Snelkoppelingen  
Afsluiters  
Roestvast staal  
Fittingen  
Luchtconditionering  
Gereedschap  
Vacuümtechniek  
Pneumatiek  
Onderdelen compressoren  
Diversen  
Malleabele fittingen & Staal  
Ringleidingssystemen  
Slangen  
Water, Gas, Sanitair, Verwarming

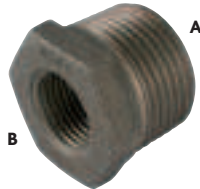
# 12 Georg Fischer malleabele fitwerk



# +GF+

## Hydrauliek 241-Verloopring

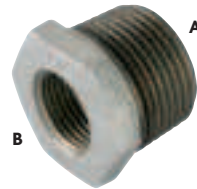
Snelkoppelingen  
Afsluiters  
Roestvast staal



Fittingen  
Zwart - BSPT male x BSP female

	0217	BSPT	BSPP	€
Gereedschap	GF241-14-18N*	1/4"	1/8"	3.30
	GF241-38-18N*	3/8"	1/8"	3.30
Vacuumtechniek	GF241-38-14N*	3/8"	1/4"	2.40
	GF241-12-18N	1/2"	1/8"	3.05
	GF241-12-14N	1/2"	1/4"	1.85
Pneumatiek	GF241-12-38N	1/2"	3/8"	1.75
	GF241-34-14N	3/4"	1/4"	3.45
Onderdelen compressoren	GF241-34-38N	3/4"	3/8"	2.70
	GF241-34-12N	3/4"	1/2"	1.85
Diversen	GF241-1-14N	1"	1/4"	5.05
	GF241-1-38N	1"	3/8"	4.35
	GF241-1-12N	1"	1/2"	2.75
Malleabele fittingen & Staal	GF241-1-34N	1"	3/4"	2.55
	GF241-114-38N	1.1/4"	3/8"	10.60
	GF241-114-12N	1.1/4"	1/2"	5.05
Ringleidingssystemen	GF241-114-34N	1.1/4"	3/4"	4.30
	GF241-114-1N	1.1/4"	1"	3.30
Slangen	GF241-112-38N	1.1/2"	3/8"	13.30
	GF241-112-12N	1.1/2"	1/2"	6.20
Water, Gas, Sanitair, Verwarming	GF241-112-34N	1.1/2"	3/4"	7.10
	GF241-112-1N	1.1/2"	1"	4.70
	GF241-112-114N	1.1/2"	1.1/4"	4.80
	GF241-2-12N	2"	1/2"	12.65
	GF241-2-34N	2"	3/4"	12.55
	GF241-2-1N	2"	1"	10.30
	GF241-2-114N	2"	1.1/4"	9.80
	GF241-2-112N	2"	1.1/2"	8.80
	GF241-212-1N	2.1/2"	1"	27.80
	GF241-212-114N	2.1/2"	1.1/4"	31.90
	GF241-212-112N	2.1/2"	1.1/2"	22.40
	GF241-212-2N	2.1/2"	2"	16.90
	GF241-3-1N	3"	1"	43.00
	GF241-3-114N	3"	1.1/4"	43.00
	GF241-3-112N	3"	1.1/2"	29.60
	GF241-3-2N	3"	2"	22.20
	GF241-3-212N	3"	2.1/2"	25.05

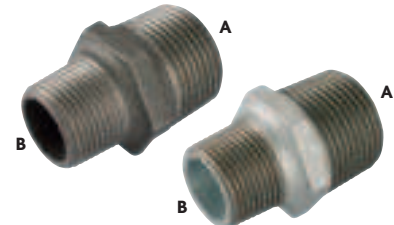
Gegalvaniseerd - BSPT male x BSP female



	0217	BSPT	BSPP	€
Gereedschap	GF241-14-18*	1/4"	1/8"	3.90
	GF241-38-18*	3/8"	1/8"	3.95
Vacuumtechniek	GF241-38-14*	3/8"	1/4"	3.05
	GF241-12-18	1/2"	1/8"	3.80
	GF241-12-14	1/2"	1/4"	2.40
Pneumatiek	GF241-12-38	1/2"	3/8"	2.40
	GF241-34-14	3/4"	1/4"	4.30
Onderdelen compressoren	GF241-34-38	3/4"	3/8"	3.30
	GF241-34-12	3/4"	1/2"	2.55
Diversen	GF241-1-14	1"	1/4"	6.20
	GF241-1-38	1"	3/8"	5.35
	GF241-1-12	1"	1/2"	3.55
Malleabele fittingen & Staal	GF241-1-34	1"	3/4"	3.35
	GF241-114-38	1.1/4"	3/8"	13.45
Ringleidingssystemen	GF241-114-12	1.1/4"	1/2"	6.00
	GF241-114-34	1.1/4"	3/4"	5.35
	GF241-114-1	1.1/4"	1"	3.95
Slangen	GF241-112-38	1.1/2"	3/8"	12.10
Water, Gas, Sanitair, Verwarming	GF241-112-12	1.1/2"	1/2"	7.90
	GF241-112-34	1.1/2"	3/4"	8.80
	GF241-112-1	1.1/2"	1"	5.90
	GF241-112-114	1.1/2"	1.1/4"	6.00
	GF241-2-12	2"	1/2"	16.00
	GF241-2-34	2"	3/4"	15.85
	GF241-2-1	2"	1"	13.00
	GF241-2-114	2"	1.1/4"	12.35
	GF241-2-112	2"	1.1/2"	11.15
	GF241-212-1	2.1/2"	1"	34.65
	GF241-212-114	2.1/2"	1.1/4"	40.00
	GF241-212-112	2.1/2"	1.1/2"	37.85
	GF241-212-2	2.1/2"	2"	21.35
	GF241-3-1	3"	1"	54.30
	GF241-3-114	3"	1.1/4"	54.30
	GF241-3-112	3"	1.1/2"	50.40
	GF241-3-2	3"	2"	27.60
	GF241-3-212	3"	2.1/2"	31.20

\* Deze artikelen zijn van gegalvaniseerd staal, en daardoor niet bruikbaar in drinkwater installaties.

## 245-Verloopnippel



Zwart - BSPT male

	0217	BSPT	BSPT	€
Gereedschap	GF245-14-18N*	1/4"	1/8"	3.80
	GF245-38-14N*	3/8"	1/4"	4.30
Vacuumtechniek	GF245-12-14N	1/2"	1/4"	5.05
	GF245-12-38N	1/2"	3/8"	4.35
Pneumatiek	GF245-34-38N	3/4"	3/8"	7.90
Onderdelen compressoren	GF245-34-12N	3/4"	1/2"	3.90
Diversen	GF245-1-12N	1"	1/2"	7.70
	GF245-1-34N	1"	3/4"	4.35
Malleabele fittingen & Staal	GF245-114-34N	1.1/4"	3/4"	10.30
Ringleidingssystemen	GF245-114-1N	1.1/4"	1"	7.20
	GF245-112-1N	1.1/2"	1"	16.30
Slangen	GF245-112-114N	1.1/2"	1.1/4"	8.70
Water, Gas, Sanitair, Verwarming	GF245-2-1N	2"	1"	19.90
	GF245-2-114N	2"	1.1/4"	25.05
	GF245-2-112N	2"	1.1/2"	16.65
	GF245-3-2N	3"	2"	49.30

Gegalvaniseerd - BSPT male

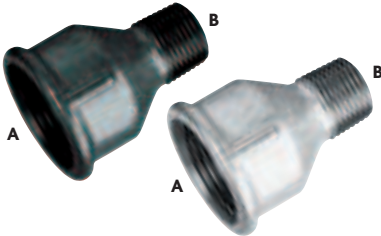
	0217	BSPT	BSPT	€
Gereedschap	GF245-14-18*	1/4"	1/8"	4.90
	GF245-38-14*	3/8"	1/4"	4.80
Vacuumtechniek	GF245-12-14	1/2"	1/4"	6.00
	GF245-12-38	1/2"	3/8"	5.55
Pneumatiek	GF245-34-38	3/4"	3/8"	9.85
Onderdelen compressoren	GF245-34-12	3/4"	1/2"	4.85
Diversen	GF245-1-12	1"	1/2"	9.75
	GF245-1-34	1"	3/4"	5.55
Malleabele fittingen & Staal	GF245-114-34	1.1/4"	3/4"	12.75
Ringleidingssystemen	GF245-114-1	1.1/4"	1"	8.80
	GF245-112-1	1.1/2"	1"	20.55
Slangen	GF245-112-114	1.1/2"	1.1/4"	11.10
Water, Gas, Sanitair, Verwarming	GF245-2-1	2"	1"	18.50
	GF245-2-114	2"	1.1/4"	31.30
	GF245-2-112	2"	1.1/2"	21.00
	GF245-3-2	3"	2"	62.30

# Georg Fischer malleabel fitwerk



# +GF+ 12

## 246-Verloop soknippel



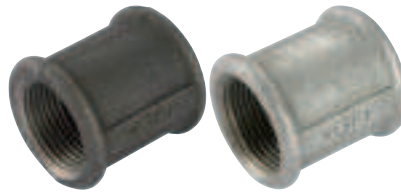
Zwart - BSPT male x BSP female

0217	BSPP	BSPT	€
	A	B	
GF246-34-12N	3/4"	1/2"	3.80
GF246-1-34N	1"	3/4"	6.10
GF246-114-1N	1.1/4"	1"	7.00

Gegalvaniseerd - BSPT male x BSP female

0217	BSPP	BSPT	€
	A	B	
GF246-34-12	3/4"	1/2"	4.80
GF246-1-34	1"	3/4"	7.80
GF246-114-1	1.1/4"	1"	8.70

## 270-Sok



Zwart - BSP female

0217	BSPP	€
GF270-18N*	1/8"	3.05
GF270-14N*	1/4"	2.85
GF270-38N	3/8"	2.70
GF270-12N	1/2"	2.10
GF270-34N	3/4"	2.75
GF270-1N	1"	3.65
GF270-114N	1.1/4"	5.95
GF270-112N	1.1/2"	8.40
GF270-2N	2"	12.65
GF270-212N	2.1/2"	35.60
GF270-3N	3"	42.70
GF270-4N	4"	98.05

Gegalvaniseerd - BSP female

0217	BSPP	€
GF270-18*	1/8"	3.80
GF270-14*	1/4"	3.80
GF270-38	3/8"	3.30
GF270-12	1/2"	2.60
GF270-34	3/4"	3.55
GF270-1	1"	4.75
GF270-114	1.1/4"	7.50
GF270-112	1.1/2"	10.75
GF270-2	2"	16.00
GF270-212	2.1/2"	44.20
GF270-3	3"	53.10
GF270-4	4"	168.10

## 280-Borstnippel



Zwart - BSPT female

0217	BSPT	€
GF280-18N*	1/8"	3.50
GF280-14N*	1/4"	3.30
GF280-38N	3/8"	3.55
GF280-12N	1/2"	1.85
GF280-34N	3/4"	2.55
GF280-1N	1"	3.50
GF280-114N	1.1/4"	5.95
GF280-112N	1.1/2"	7.00
GF280-2N	2"	12.45
GF280-212N	2.1/2"	22.40
GF280-3N	3"	27.20
GF280-4N	4"	98.05

Gegalvaniseerd - BSPT female

0217	BSPT	€
GF280-18*	1/8"	4.35
GF280-14*	1/4"	3.90
GF280-38	3/8"	4.45
GF280-12	1/2"	2.45
GF280-34	3/4"	3.20
GF280-1	1"	4.65
GF280-114	1.1/4"	7.50
GF280-112	1.1/2"	8.70
GF280-2	2"	15.60
GF280-212	2.1/2"	27.95
GF280-3	3"	33.60
GF280-4	4"	124.00

Hydrauliek  
Snelkoppelingen  
Afsluiters  
Roestvast staal  
Fittingen  
Luchtconditionering  
Gereedschap  
Vacuümtechniek  
Pneumatiek  
Onderdelen compressoren  
Diversen  
Malleabele fittingen & Staal  
Ringleidingssystemen  
Slangen  
Water, Gas, Sanitair, Verwarming

\* Deze artikelen zijn van gegalvaniseerd staal, en daardoor niet bruikbaar in drinkwater installaties.

Vindt u in hoofdstuk 2



# 12 Georg Fischer malleabel fitwerk



# +GF+

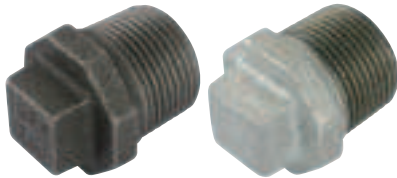
## Hydrauliek 290-Plug met vierkante kop

Snelkoppelingen

Afsluiters

Roestvast staal

Fittingen



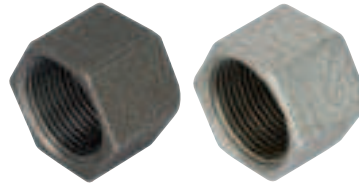
### Luchtconditionering Zwart - BSPT male

Gereedschap	0217	BSPT	€
Vacuümtechniek	GF290-14N	1/4"	1.75
	GF290-38N	3/8"	1.55
	GF290-12N	1/2"	1.55
Pneumatiek	GF290-34N	3/4"	2.10
	GF290-1N	1"	2.40
Onderdelen compressoren	GF290-114N	1.1/4"	4.05
	GF290-112N	1.1/2"	5.20
	GF290-2N	2"	9.20

### Diversen Gegalvaniseerd - BSPT male

Malleabele fittingen & Staal	0217	BSPT	€
Ringleidingssystemen	GF290-14	1/4"	2.30
	GF290-38	3/8"	1.85
	GF290-12	1/2"	1.85
Slangen	GF290-34	3/4"	2.55
	GF290-1	1"	2.85
Water, Gas, Sanitair, Verwarming	GF290-114	1.1/4"	5.20
	GF290-112	1.1/2"	6.35
	GF290-2	2"	11.40

## 300-Kap zeskant



### Zwart - BSP male

0217	BSPP	€
GF300-14N	1/4"	2.25
GF300-38N	3/8"	2.00
GF300-12N	1/2"	2.40
GF300-34N	3/4"	2.75
GF300-1N	1"	3.40
GF300-114N	1.1/4"	5.20
GF300-112N	1.1/2"	6.40
GF300-2N	2"	11.85
GF300-212N	2.1/2"	21.75
GF300-3N	3"	23.70
GF300-4N	4"	51.10

### Gegalvaniseerd - BSP female

0217	BSPP	€
GF300-14	1/4"	2.85
GF300-38	3/8"	2.60
GF300-12	1/2"	3.00
GF300-34	3/4"	3.55
GF300-1	1"	4.25
GF300-114	1.1/4"	6.35
GF300-112	1.1/2"	7.90
GF300-2	2"	14.95
GF300-212	2.1/2"	27.10
GF300-3	3"	29.60
GF300-4	4"	87.95

## 321-Voorlasflens



### Zwart

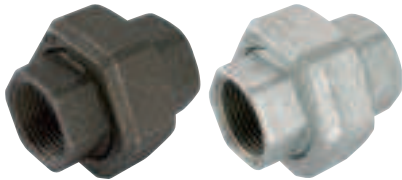
0217	€
GF321-12N	1/2" 14.60
GF321-34N	3/4" 13.05
GF321-1N	1" 15.20
GF321-114N	1.1/4" 20.20
GF321-112N	1.1/2" 33.35
GF321-2N	2" 40.40

### Gegalvaniseerd

0217	€
GF321-12	1/2" 18.15
GF321-34	3/4" 22.40
GF321-1	1" 25.95
GF321-114	1.1/4" 34.50
GF321-112	1.1/2" 41.95
GF321-2	2" 50.65



## 330-Driedelige koppeling met vlakke dichting female



Zwart - BSP female

0217	BSPP	€
GF330-12N	1/2"	7.90
GF330-34N	3/4"	8.95
GF330-1N	1"	10.00
GF330-114N	1.1/4"	17.30
GF330-112N	1.1/2"	22.25
GF330-2N	2"	36.65

Gegalvaniseerd - BSP female

0217	BSPP	€
GF330-12N	1/2"	7.90
GF330-34N	3/4"	8.95
GF330-1N	1"	10.00
GF330-114N	1.1/4"	17.30
GF330-112N	1.1/2"	22.25
GF330-2N	2"	36.65

## 341-Driedelige koppeling met conische dichting male x female



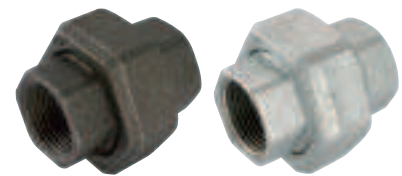
Zwart - BSPT male x BSP female

0217		€
GF341-14N	1/4"	14.35
GF341-38N	3/8"	11.05
GF341-12N	1/2"	9.30
GF341-34N	3/4"	11.20
GF341-1N	1"	13.90
GF341-114N	1.1/4"	21.95
GF341-112N	1.1/2"	28.10
GF341-2N	2"	44.85
GF341-212N	2.1/2"	97.60
GF341-3N	3"	152.45

Gegalvaniseerd - BSPT male x BSP female

0217		€
GF341-14	1/4"	17.80
GF341-38	3/8"	13.90
GF341-12	1/2"	11.60
GF341-34	3/4"	14.05
GF341-1	1"	17.40
GF341-114	1.1/4"	27.60
GF341-112	1.1/2"	35.45
GF341-2	2"	56.50
GF341-212	2.1/2"	123.45
GF341-3	3"	193.00

## 340-Driedelige koppeling met conische dichting female



Zwart - BSP female

0217	BSPP	€
GF340-14N	1/4"	13.90
GF340-38N	3/8"	12.55
GF340-12N	1/2"	9.40
GF340-34N	3/4"	10.65
GF340-1N	1"	12.45
GF340-114N	1.1/4"	20.50
GF340-112N	1.1/2"	24.10
GF340-2N	2"	39.50
GF340-212N	2.1/2"	89.35
GF340-3N	3"	124.55
GF340-4N	4"	340.85

Gegalvaniseerd - BSP female

0217	BSPP	€
GF340-14	1/4"	17.10
GF340-38	3/8"	15.40
GF340-12	1/2"	11.85
GF340-34	3/4"	13.45
GF340-1	1"	15.50
GF340-114	1.1/4"	26.70
GF340-112	1.1/2"	31.20
GF340-2	2"	51.35
GF340-212	2.1/2"	113.10
GF340-3	3"	157.75
GF340-4	4"	431.90

Hydrauliek  
Snelkoppelingen  
Afsluiters  
Roestvast staal  
Fittingen  
Luchtconditionering  
Gereedschap  
Vacuumtechniek  
Pneumatiek  
Onderdelen compressoren  
Diversen  
Malleabele fittingen & Staal  
Ringleidingssystemen  
Slangen  
Water, Gas, Sanitair, Verwarming

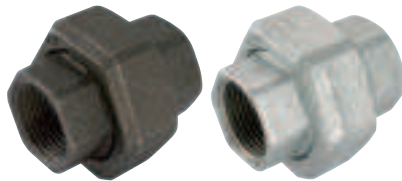
# 12 Georg Fischer malleabel fitwerk



# +GF+

**342-Driedelige koppeling met bolronde dichting female**

- Hydrauliek
- Snelkoppelingen
- Afsluiters
- Roestvast staal
- Fittingen
- Luchtconditionering
- Gereedschap
- Vacuumtechniek
- Pneumatiek
- Onderdelen compressoren
- Diversen
- Malleabele fittingen & Staal
- Ringleidingssystemen
- Slangen
- Water, Gas, Sanitair, Verwarming



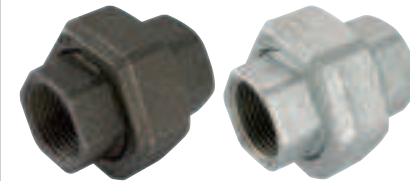
Zwart - BSP female

	0217	BSPP	€
GF342-12N	1/2"		30.95
GF342-34N	3/4"		34.40
GF342-1N	1"		44.90
GF342-114N	1.1/4"		62.05
GF342-112N	1.1/2"		75.15
GF342-2N	2"		95.15

Gegalvaniseerd - BSP female

	0217	BSPP	€
GF342-12	1/2"		43.55
GF342-34	3/4"		51.30
GF342-1	1"		64.05
GF342-114	1.1/4"		92.40
GF342-112	1.1/2"		112.00
GF342-2	2"		135.65

**342a-Driedelige koppeling met bolronde dichting female**



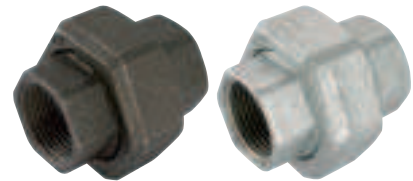
Zwart - BSP female

	0217	BSPP	€
GF342A-12N	1/2"		41.35
GF342A-34N	3/4"		45.60
GF342A-1N	1"		60.35
GF342A-114N	1.1/4"		83.05
GF342A-112N	1.1/2"		100.10
GF342A-2N	2"		127.30

Gegalvaniseerd - BSP female

	0217	BSPP	€
GF342A-12	1/2"		60.05
GF342A-34	3/4"		66.50
GF342A-1	1"		87.60
GF342A-114	1.1/4"		120.75
GF342A-112	1.1/2"		145.85
GF342A-2	2"		185.25

**346-Driedelige koppeling met bolronde dichting female**



Zwart - BSP female

	0217	BSPP	€
GF346-12N	1/2"		25.55
GF346-34N	3/4"		31.40
GF346-1N	1"		38.50
GF346-114N	1.1/4"		51.00
GF346-112N	1.1/2"		67.70
GF346-2N	2"		95.30

Gegalvaniseerd - BSP female

	0217	BSPP	€
GF346-12	1/2"		36.30
GF346-34	3/4"		44.55
GF346-1	1"		55.00
GF346-114	1.1/4"		72.55
GF346-112	1.1/2"		96.35
GF346-2	2"		135.80

# Gasbuizen - staal









12






## Gelaste verzinkte gasbuizen

- In- en uitwendig thermisch verzinkt.
  - NEN-3257 / DIN-2440
  - Installatie kwaliteit.
- (het gewicht van de buizen is per meter)

Glادة einden / lengtes van 6 meter / DIN 2440 /  
werkdruk 25 bar

					
9700017	3/8"	2.32	17.2	0.89	Op aanvraag
9700021	1/2"	2.65	21.3	1.27	Op aanvraag
9700027	3/4"	2.65	26.9	1.65	Op aanvraag
9700032	1"	3.25	33.7	2.55	Op aanvraag
9700042	1.1/4"	3.25	42.4	3.28	Op aanvraag
9700048	1.1/2"	3.25	48.3	3.77	Op aanvraag
9700060	2"	3.65	60.3	5.33	Op aanvraag
9700076	2.1/2"	3.65	76.1	6.8	Op aanvraag
9700089	3"	4.05	88.9	8.85	Op aanvraag
9700114	4"	4.5	114.3	12.8	Op aanvraag

Glادة einden / lengtes van 3 meter / DIN 2440 /  
werkdruk 25 bar

				
9700017-3	3/8"	2.32	17.2	Op aanvraag
9700021-3	1/2"	2.65	21.3	Op aanvraag
9700027-3	3/4"	2.65	26.9	Op aanvraag
9700032-3	1"	3.25	33.7	Op aanvraag
9700042-3	1.1/4"	3.25	42.4	Op aanvraag
9700048-3	1.1/2"	3.25	48.3	Op aanvraag
9700060-3	2"	3.65	60.3	Op aanvraag
9700076-3	2.1/2"	3.65	76.1	Op aanvraag
9700089-3	3"	4.05	88.9	Op aanvraag
9700114-3	4"	4.5	114.3	Op aanvraag



- Hydrauliek
- Snelkoppelingen
- Afsluiters
- Roestvast staal
- Fittingen
- Luchtconditionering
- Gereedschap
- Vacuümtechniek
- Pneumatiek
- Onderdelen compressoren
- Diversen
- Malleabele fittingen & Staal**
- Ringleidingssystemen
- Slangen
- Water, Gas, Sanitair, Verwarming

Hogedrukleidingen vindt u in hoofdstuk 1



# 12 Flenzen - staal



**Topkwaliteit voor een breed scala aan toepassingen binnen de chemische en petrochemische industrie, offshore, etc.**  
 Naast dit assortiment van meest toegepaste flenzen zijn een groot aantal types en maten op aanvraag leverbaar.

**Hydrauliek**  
 Draadflenzen staal C22,8, volgens DIN normering 2566

**Snelkoppelingen**  
 Voorlasflenzen staal C22,8 volgens DIN normering 2633 (2631/2635)

**Afsluiters**  
 Vlakke lasflenzen staal 37,2 volgens DIN normering 2576

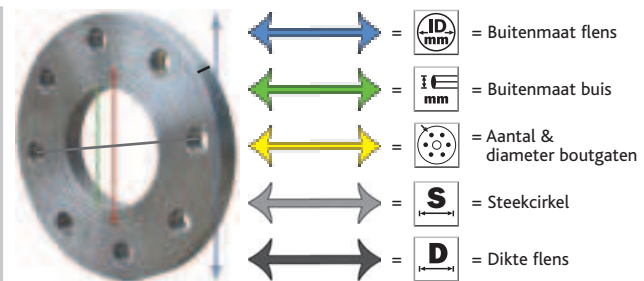
**Roestvast staal**  
 Blindflenzen staal 37, volgens DIN normering 2527

**Fittingen**  
 Draadflenzen staal DIN 2566 ST37 verzinkt - 16 bar

<b>DN15-DF16B-12</b>		65	14	1/2"	95	21,3	4 x 14mm	<b>15.15</b>
<b>DN20-DF16B-34</b>		75	16	3/4"	105	26,9	4 x 14mm	<b>16.95</b>
<b>DN25-DF16B-1</b>		85	16	1"	115	33,7	4 x 14mm	<b>17.85</b>
<b>DN32-DF16B-114</b>		100	16	1.1/4"	140	42,4	4 x 18mm	<b>25.00</b>
<b>DN40-DF16B-112</b>		110	16	1.1/2"	150	48,3	4 x 18mm	<b>26.80</b>
<b>DN50-DF16B-2</b>		125	18	2"	165	60,3	4 x 18mm	<b>33.90</b>
<b>DN65-DF16B-212</b>		145	18	2.1/2"	185	76,1	4 x 18mm	<b>41.95</b>
<b>DN80-DF16B-3</b>		160	20	3"	200	88,9	8 x 18mm	<b>50.00</b>
<b>DN100-DF16B-4</b>		180	20	4"	220	114,3	8 x 18mm	<b>56.20</b>

**Malleabele fittingen & Staal**  
 Draadflenzen staal DIN 2566 ST37 zwart - 16 bar

<b>DN15-DF16B-12Z</b>		65	14	1/2"	95	21,3	4 x 14mm	<b>9.80</b>
<b>DN20-DF16B-34Z</b>		75	16	3/4"	105	26,9	4 x 14mm	<b>10.70</b>
<b>DN25-DF16B-1Z</b>		85	16	1"	115	33,7	4 x 14mm	<b>11.60</b>
<b>DN32-DF16B-114Z</b>		100	16	1.1/4"	140	42,4	4 x 18mm	<b>15.15</b>
<b>DN40-DF16B-112Z</b>		110	16	1.1/2"	150	48,3	4 x 18mm	<b>16.95</b>
<b>DN50-DF16B-2Z</b>		125	18	2"	165	60,3	4 x 18mm	<b>20.50</b>
<b>DN65-DF16B-212Z</b>		145	18	2.1/2"	185	76,1	4 x 18mm	<b>25.90</b>
<b>DN80-DF16B-3Z</b>		160	20	3"	200	88,9	8 x 18mm	<b>31.25</b>
<b>DN100-DF16B-4Z</b>		180	20	4"	220	114,3	8 x 18mm	<b>34.80</b>



Voorlasflenzen in PN6 (DIN 2631), PN10 (DIN 2632) en PN40 (DIN 2635) en in andere maten zijn op aanvraag leverbaar.

Voorlasflenzen staal DIN 2633 C22,8 - 16 bar

<b>DN015-VLF021-16</b>		65	14	95	21,3	4 x 14mm	<b>5.80</b>
<b>DN020-VLF026-16</b>		75	16	105	26,9	4 x 14mm	<b>7.15</b>
<b>DN025-VLF033-16</b>		85	16	115	33,7	4 x 14mm	<b>7.15</b>
<b>DN032-VLF042-16</b>		100	16	140	42,4	4 x 18mm	<b>10.30</b>
<b>DN040-VLF048-16</b>		110	16	150	48,3	4 x 18mm	<b>11.05</b>
<b>DN050-VLF060-16</b>		125	18	165	60,3	4 x 18mm	<b>13.00</b>
<b>DN065-VLF076-16</b>		145	18	185	76,1	4 x 18mm	<b>15.75</b>
<b>DN080-VLF088-16</b>		160	20	200	88,9	8 x 18mm	<b>19.45</b>
<b>DN100-VLF114-16</b>		180	20	220	114,3	8 x 18mm	<b>23.65</b>
<b>DN125-VLF139-16</b>		210	22	250	139,7	8 x 18mm	<b>32.10</b>
<b>DN150-VLF168-16</b>		240	22	285	168,3	8 x 22mm	<b>40.90</b>
<b>DN200-VLF219-16</b>		295	24	340	219,1	12 x 22mm	<b>59.80</b>

Vlakke lasflenzen in PN6 (DIN 2573) en in andere maten zijn op aanvraag leverbaar.

Vlakke lasflenzen staal DIN 2576 ST37,2

<b>DN015-SLF021-16</b>		65	14	16	95	21,3	4 x 14mm	<b>4.90</b>
<b>DN020-SLF026-16</b>		75	16	16	105	26,9	4 x 14mm	<b>5.35</b>
<b>DN025-SLF033-16</b>		85	16	16	115	33,7	4 x 14mm	<b>6.25</b>
<b>DN032-SLF042-16</b>		100	16	16	140	42,4	4 x 18mm	<b>8.50</b>
<b>DN040-SLF048-16</b>		110	16	16	150	48,3	4 x 18mm	<b>10.30</b>
<b>DN050-SLF060-16</b>		125	18	16	165	60,3	4 x 18mm	<b>13.70</b>
<b>DN065-SLF076-16</b>		145	18	16	185	76,1	4 x 18mm	<b>18.30</b>
<b>DN080-SLF088-10</b>		160	20	10	200	88,9	4 x 18mm	<b>17.85</b>
<b>DN080-SLF088-16</b>		160	20	16	200	88,9	8 x 18mm	<b>22.75</b>
<b>DN100-SLF114-16</b>		180	20	16	220	114,3	8 x 18mm	<b>24.20</b>
<b>DN125-SLF139-16</b>		210	22	16	250	139,7	8 x 18mm	<b>27.65</b>
<b>DN150-SLF168-16</b>		240	22	16	285	168,3	8 x 22mm	<b>34.90</b>
<b>DN200-SLF219-10</b>		295	24	10	340	219,1	8 x 22mm	<b>48.65</b>
<b>DN200-SLF219-16</b>		295	24	16	340	219,1	12 x 22mm	<b>47.30</b>
<b>DN250-SLF273-10</b>		350	26	10	395	273,0	12 x 22mm	<b>71.00</b>
<b>DN300-SLF323-10</b>		400	26	10	445	323,9	12 x 22mm	<b>78.55</b>
<b>DN350-SLF355-10</b>		460	28	10	505	355,6	16 x 22mm	<b>112.45</b>
<b>DN400-SLF406-10</b>		515	32	10	565	406,4	16 x 26mm	<b>133.00</b>
<b>DN450-SLF457-10</b>		565	26	10	615	457,0	20 x 27mm	<b>153.50</b>
<b>DN500-SLF508-10</b>		620	26	10	670	508,0	20 x 27mm	<b>195.45</b>

# Flenzen - staal



12

## Blindflenzen staal DIN 2527 ST37 - 16 bar

FLEN	S	D	bar	ID. mm		€
DN015-BF-16	65	14	16	95	4 x 14mm	4.45
DN020-BF-16	75	16	16	105	4 x 14mm	6.10
DN025-BF-16	85	16	16	115	4 x 14mm	7.50
DN032-BF-16	100	16	16	140	4 x 18mm	9.35
DN040-BF-16	110	16	16	150	4 x 18mm	10.70
DN050-BF-16	125	18	16	165	4 x 18mm	17.15
DN065-BF-16	145	18	16	185	4 x 18mm	19.05
DN080-BF-16	160	20	16	200	8 x 18mm	28.70
DN100-BF-16	180	20	16	220	8 x 18mm	29.30
DN125-BF-16	210	22	16	250	8 x 18mm	47.95
DN150-BF-16	240	22	16	285	8 x 22mm	55.35



## Blindflenzen staal DIN 2527 ST37 - 10 bar

FLEN	S	D	bar	ID. mm		€
DN080-BF-10	160	20	10	200	4 x 18mm	24.10
DN200-BF-10	295	24	10	340	8 x 22mm	101.85
DN250-BF-10	350	26	10	395	12 x 22mm	144.05
DN300-BF-10	400	26	10	445	12 x 22mm	175.80
DN350-BF-10	460	26	10	505	16 x 22mm	225.80
DN400-BF-10	515	26	10	565	16 x 26mm	282.00
DN450-BF-10	565	28	10	615	20 x 27mm	359.70
DN500-BF-10	620	28	10	670	20 x 26mm	429.30



## Universele HD flenspakking ring - 16 bar - zonder boutgaten

FLEN	To Suit	€
PF16DN015	DN015	0.50
PF16DN020	DN020	0.65
PF16DN025	DN025	0.90
PF16DN032	DN032	1.15
PF16DN040	DN040	1.20
PF16DN050	DN050	1.35
PF16DN065	DN065	1.70
PF16DN080	DN080	2.00
PF16DN100	DN100	2.40
PF16DN125	DN125	3.80
PF16DN150	DN150	4.75
PF16DN250	DN250	10.00
PF16DN300	DN300	14.00
PF16DN350	DN350	18.95

Hydrauliek  
Snel-  
koppelingen  
Afsluiters  
Roestvast  
staal  
Fittingen  
Lucht-  
conditionering  
Gereedschap  
Vacuüm-  
techniek  
Pneumatiek  
Onderdelen  
compressoren  
Diversen

Malleabele  
fittingen  
& Staal  
Ringleiding-  
systemen  
Slangen  
Water, Gas,  
Sanitair,  
Verwarming

# 12 Flenzen - staal



Hydrauliek

Snel-  
koppelingen

Afsluiters

Roestvast  
staal

Fittingen

Lucht-  
conditionering

Gereedschap

Vacuum-  
techniek



Universele bouten voor flenzen - staal 8.8 gegalvaniseerd

<b>FBOUTM12x50</b>	M12	14	50	<b>0.35</b>	
<b>FBOUTM16x65</b>	M16	18	65	<b>0.95</b>	
<b>FBOUTM20x90</b>	M20	22	90	<b>1.85</b>	
<b>FBOUTM24x90</b>	M24	26 & 27	90	<b>3.00</b>	

Pneumatiek Universele moeren voor flenzen - staal 8.8 gegalvaniseerd

Onderdelen  
compressoren

Diversen

Malleabele  
fittingen  
& Staal

<b>FMOERM12</b>	M12	14	<b>0.07</b>	
<b>FMOERM16</b>	M16	18	<b>0.20</b>	
<b>FMOERM20</b>	M20	22	<b>0.30</b>	
<b>FMOERM24</b>	M24	26 & 27	<b>0.70</b>	

Ringleiding-  
systemen Universele sluitringen voor flenzen - staal 8.8 gegalvaniseerd

Slangen

Water, Gas,  
Sanitair,  
Verwarming

<b>FSLRINGM12</b>	M12	14	<b>0.05</b>	
<b>FSLRINGM16</b>	M16	18	<b>0.11</b>	
<b>FSLRINGM20</b>	M20	22	<b>0.15</b>	
<b>FSLRINGM24</b>	M24	26 & 27	<b>0.30</b>	

Universele veerringen voor flenzen - staal 8.8 gegalvaniseerd

<b>FVEERRINGM12</b>	M12	14	<b>0.05</b>	
<b>FVEERRINGM16</b>	M16	18	<b>0.10</b>	
<b>FVEERRINGM20</b>	M20	22	<b>0.15</b>	
<b>FVEERRINGM24</b>	M24	26 & 27	<b>0.20</b>	

Andere uitvoeringen en materialen zijn op aanvraag leverbaar.